

# Dental Clinic Suction Dust Collector

Model: TR-LUE02



# Instruction Manual

**Please read this instruction carefully before use and keep it properly for future reference.**

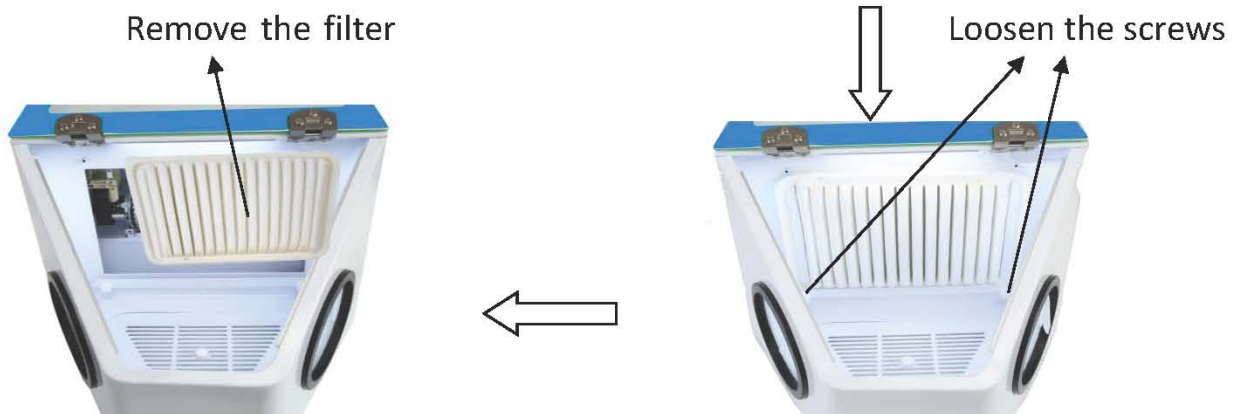
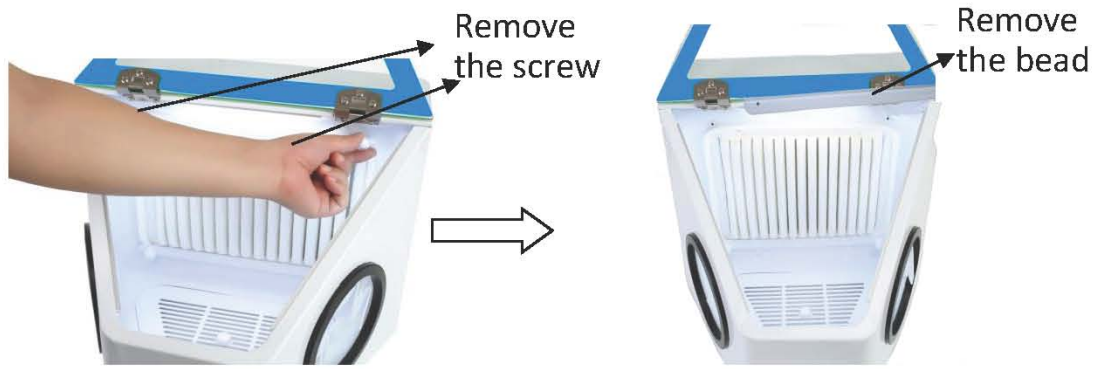
### **1、 Product overview**

**TR-LUE02 is lighting, dust, dust collection integrated vacuum box.**

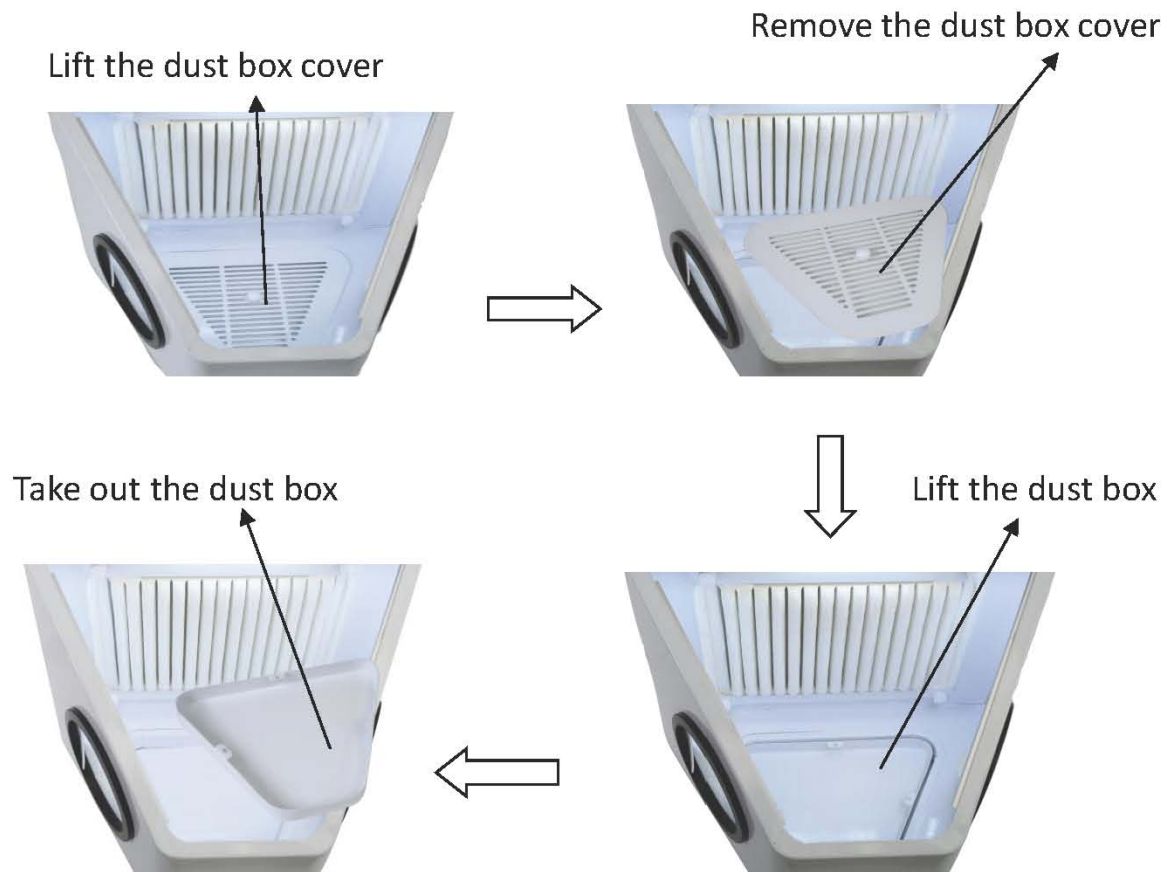
### **2、 Technical parameters**

<b>Model</b>	<b>TR-LUE02</b>
<b>Input voltage</b>	<b>AC 110V 60Hz 220V 50HZ</b>
<b>Power</b>	<b>54W</b>
<b>Noise</b>	<b>42dB</b>
<b>Air volume</b>	<b>170m<sup>3</sup>/hour</b>
<b>Machine dimensions</b>	<b>400*400*300mm</b>
<b>Net weight</b>	<b>12KG</b>
<b>Gross weight</b>	<b>13KG</b>

### 3、 Filter element replacement



### 4、 Dust collecting box



### 5、 Requirements

(1). The filter should be replaced regularly to ensure that the machine works in good condition. Be sure to cut off the power before replacing and maintaining the filter!

◆ The filter element provided by the original factory must be used, otherwise, our company will not be responsible for the machine failure caused by this!

## 6、 Packing list

<b>Host</b>	<b>1</b>
<b>Power cord</b>	<b>1</b>
<b>Holding hands</b>	<b>2</b>
<b>Dust collecting cover</b>	<b>1</b>
<b>Dust collection box</b>	<b>1</b>
<b>Instructions</b>	<b>1</b>
<b>Warranty card</b>	<b>1</b>
<b>Certificate</b>	<b>1</b>