

Ds530 Oral Digital Image System Operation and technical manual

Create a perfect digital image system for your clinic.

- * Before you use the oral digital image system, please read carefully of all safety and operation instruction in the operation manual. You will enjoy DS530 oral digital image system bring you all kinds of convenient and efficiency in this operation manual.
- * Please be careful to keep the operation manual, so that you can reference at any time.
- * When you using, Please operate and maintain according to the operation rules strictly.
- * If you have any problems in using, you can contact with local distributor or our company. We will provide perfect service and help to you.

Production enterprise license: Zhejiang food and Drug Administration license number 20120084

Product technical requirements number: Zhejiang instrument registration permit number 20152300206

Register number: Zhejiang instrument registration permit number 20152300206

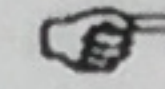
Version number: The first edition of Runyes-2015-12

Software installation

for your satisfaction

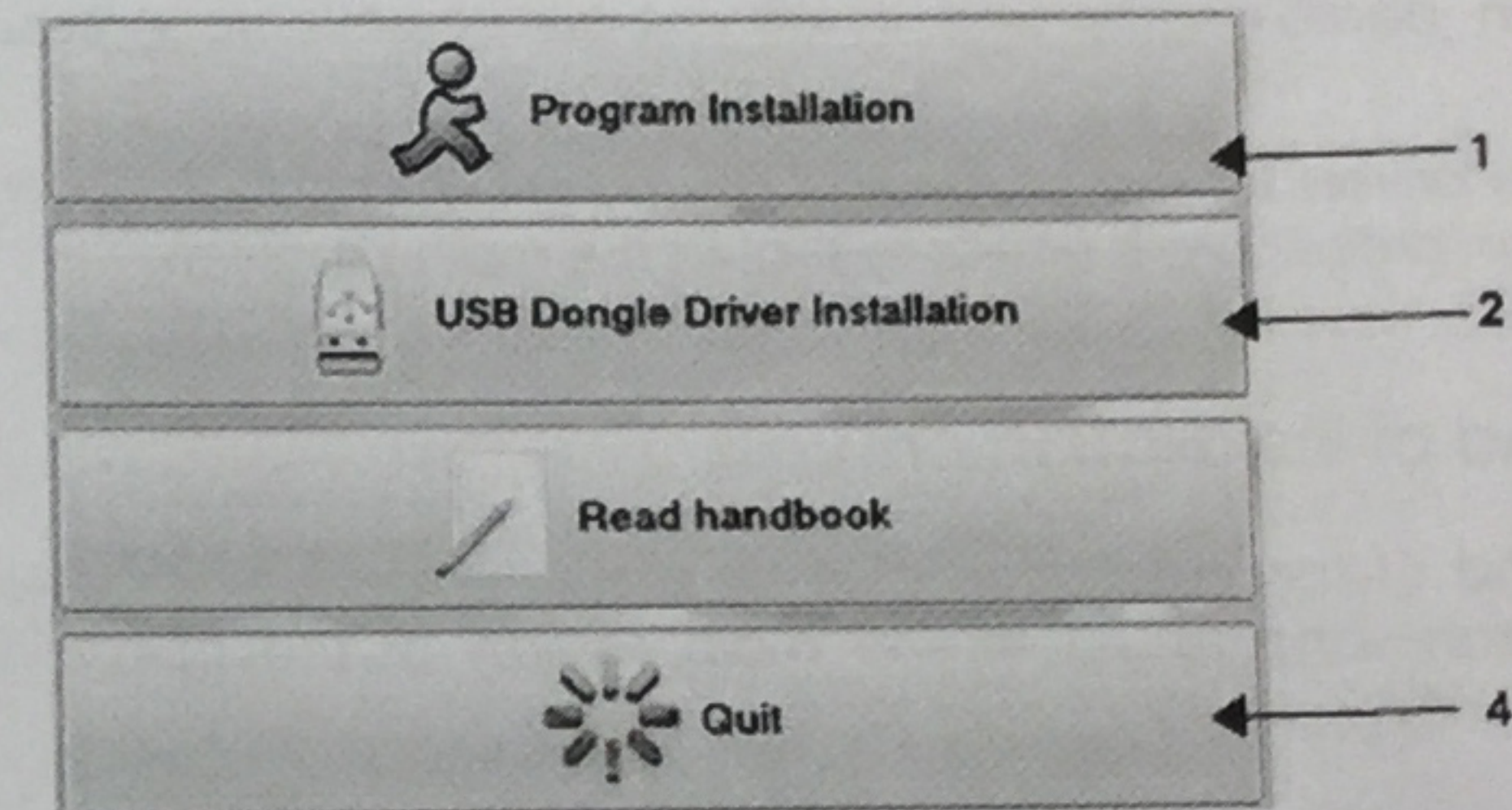
1 ARCHIMED SUITE INSTALLATION AND CONFIGURATION

1.1 Installation



In the main screen of the start-up procedure, it is possible to select the language that will be used during the installation. Please select your preferred language.

When you insert the installation CD in the CD Rom reader the following window will be displayed.

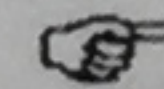


Follow these steps to install the application.

1.1.1 Installation of program

Select button "1" to install the ARCHIMED SUITE program on your computer; the installation procedure involves a number of different steps, all of which are noted via special windows or messages.

Press the "Next" button in each window to confirm the task to perform.



NOTE

During installation, you will be asked if you would like to create a desktop shortcut (to add a program icon on your desktop). We recommend that you confirm the creation of this desktop shortcut for easy access to the ARCHIMED SUITE program.

When the program is loading a progress bar will appear showing the percentage of completion of installation; when installation is completed, a window will appear confirming that the installation is complete; in this window you must select "End" to return to the main installation screen.

1.1.2 Installation of the protection key drivers

The ARCHIMED SUITE program is protected by a hardware protection key; without this key, the program will not work or remain in demo mode and it will not be possible to capture images.

Install the drivers for the protection key by pressing button "2"; the installation procedure is similar to that of the main program.

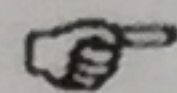
1.1.3 End of installation process

At the end of the installation process press the button "4" to exit the program and return to the main screen of the operating system in use.

1.1.4 Installation of sensor drivers

The sensor requires a special program (driver) for it to work properly; follow the following procedure:

1. Open the install disk with the command explores
2. Navigate to the folder "Drivers_I-View_H"
3. Double click on the file "Driver Setup_32bit.exe" or "Driver Setup_64bit.exe" depending on the type of PC available.



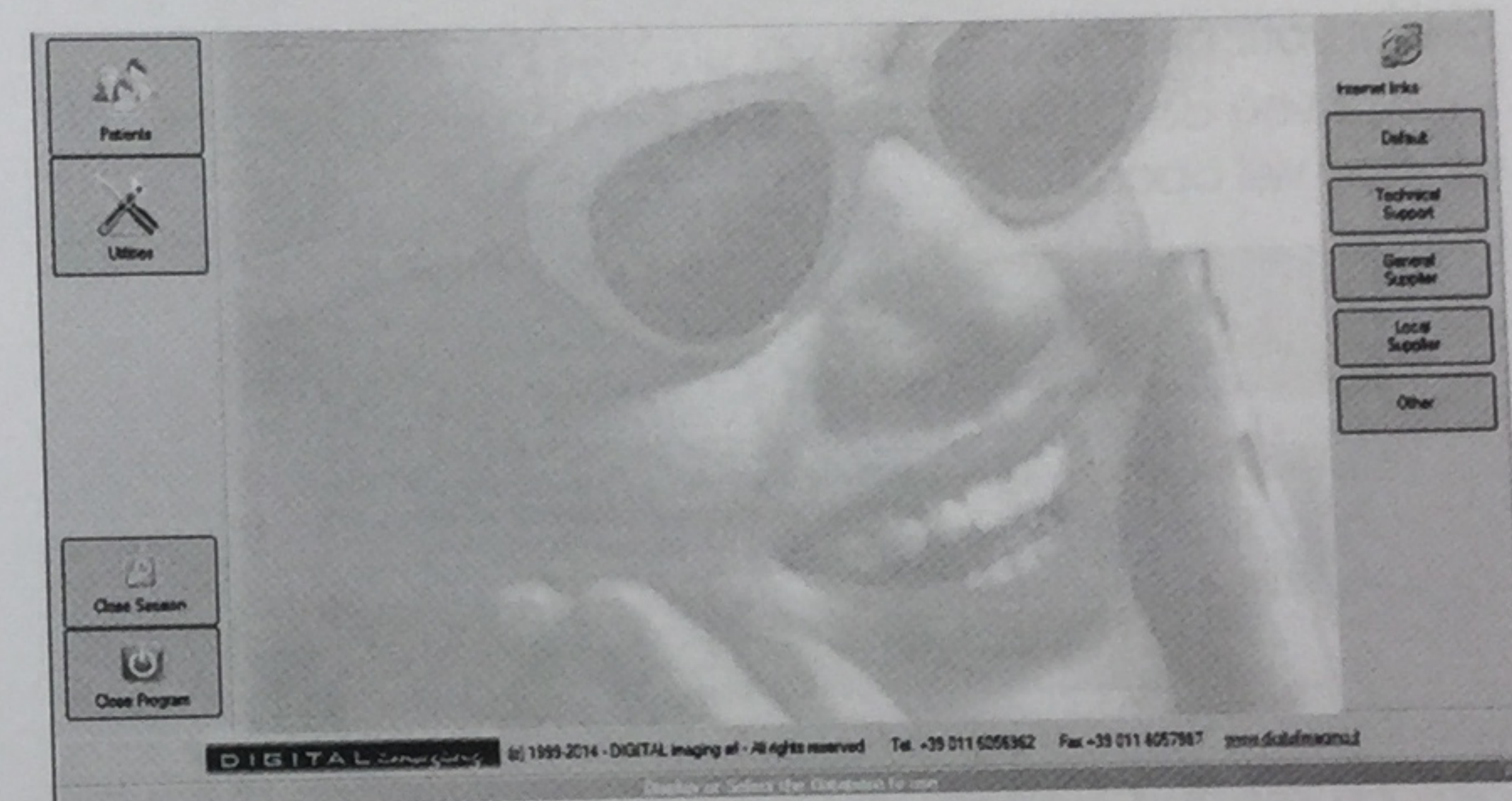
NOTE

The selection of the sensor type is irrespective of the size of the sensor (size 1 or size 2) because it is automatically detected by the driver. Always select "I-VIEW H" for proper operation of the acquisition program, regardless of the size of the sensor (or sensors) used.

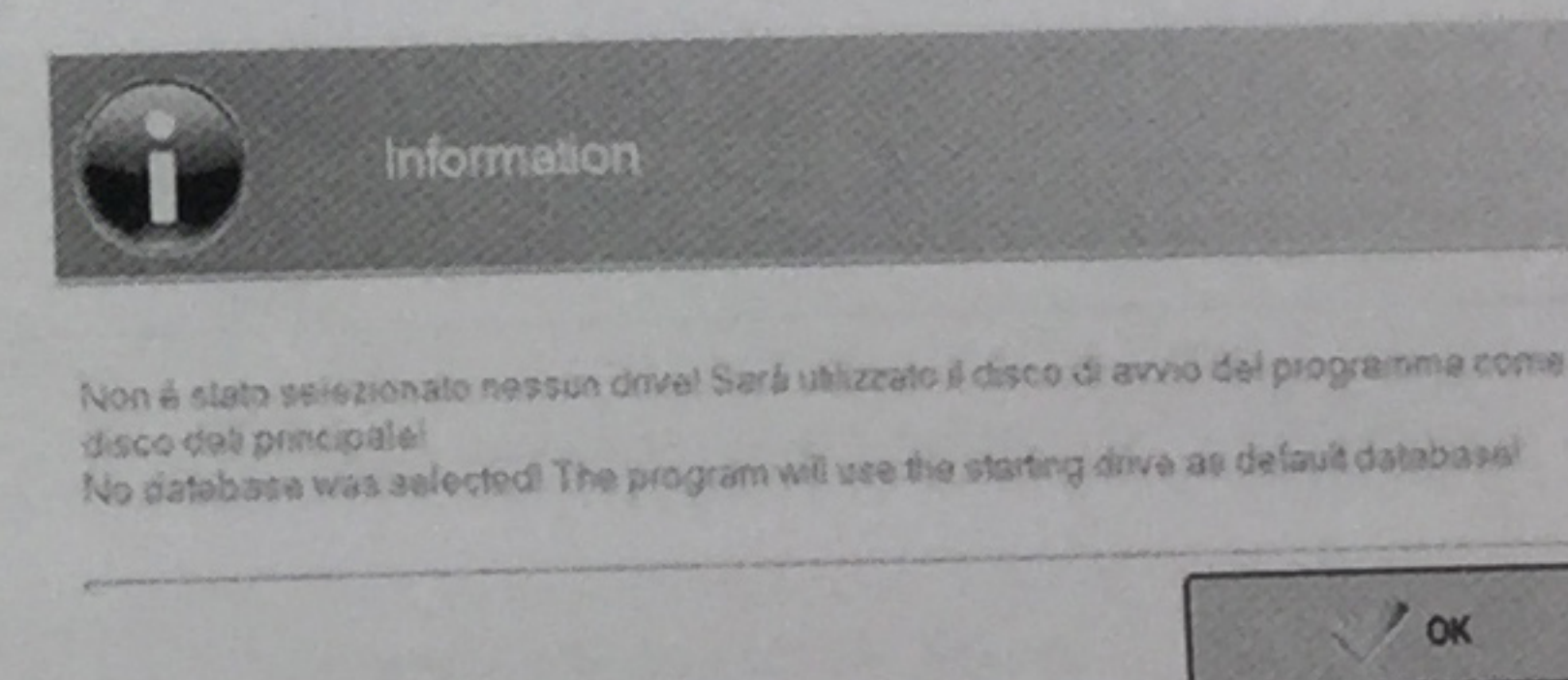
1.2 Software initialization

The following procedure has to be performed on the first use of the program, because Archimed Suite needs to be properly configured.

Insert the USB dongle protection key on the PC and start the program. The following is the main screen

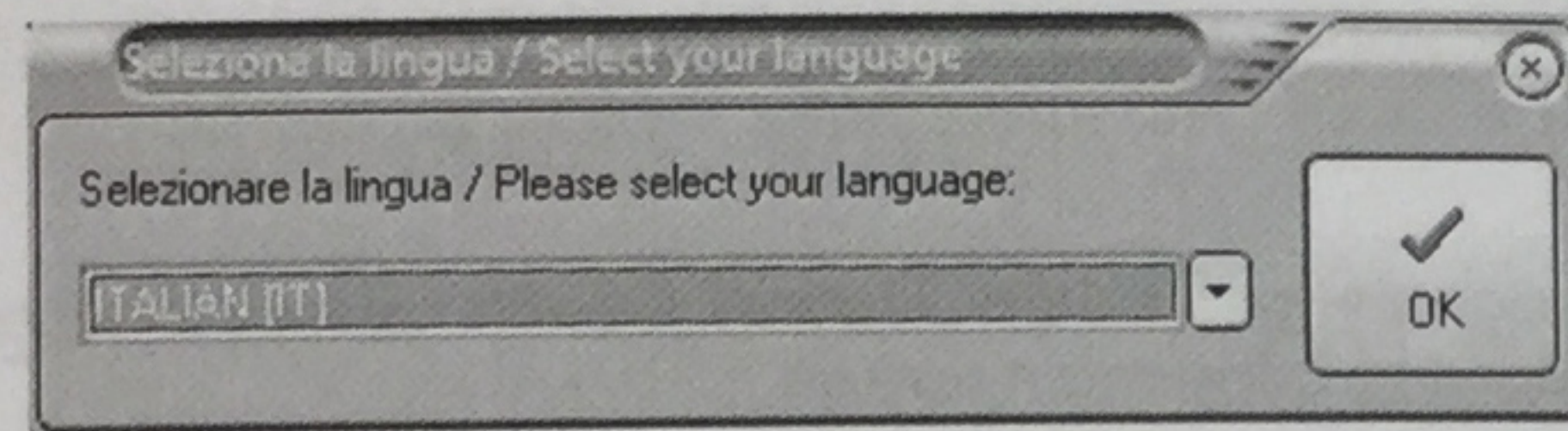


The application is protected by user identification with different permission levels. At the first run of the software it will appear this window

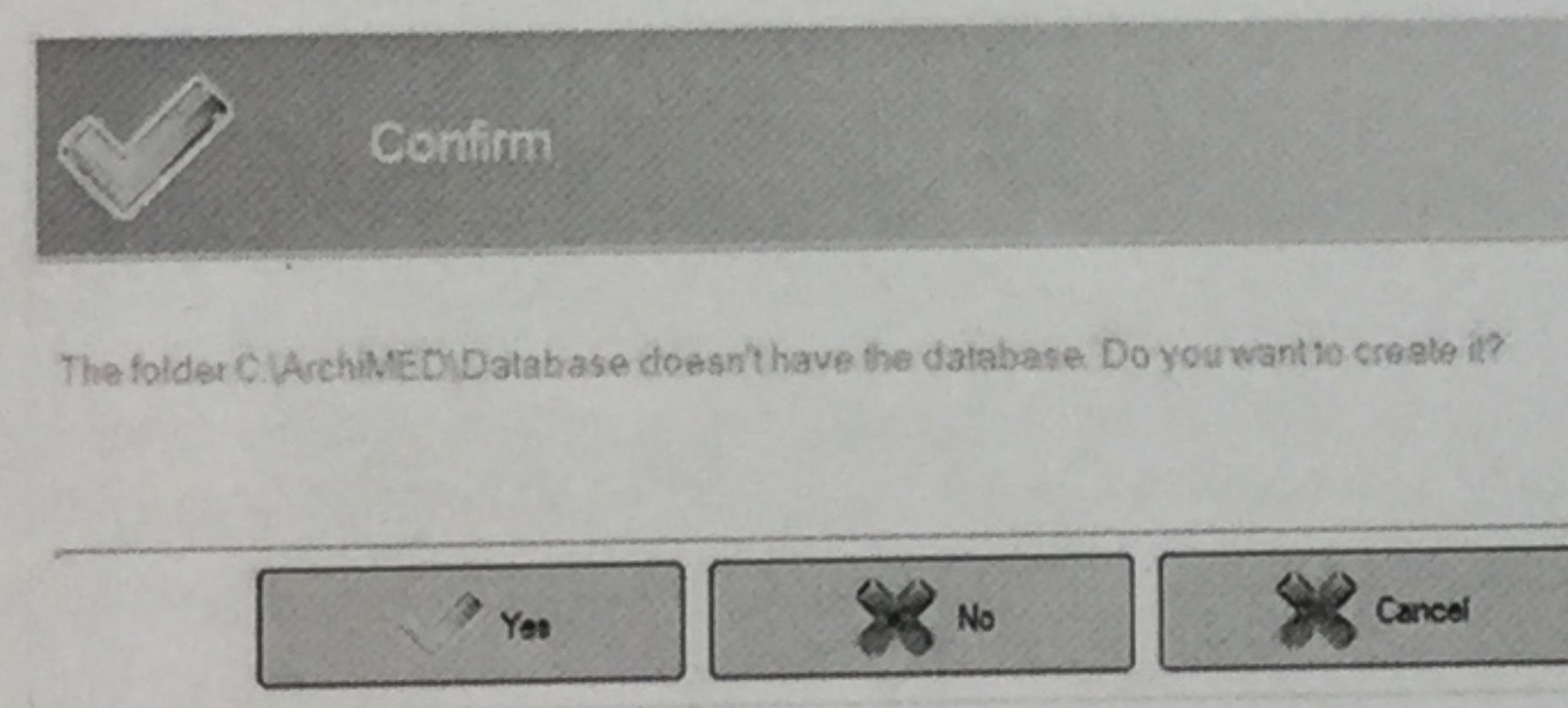


Click on OK and the program will automatically use the software starting drive as default database.

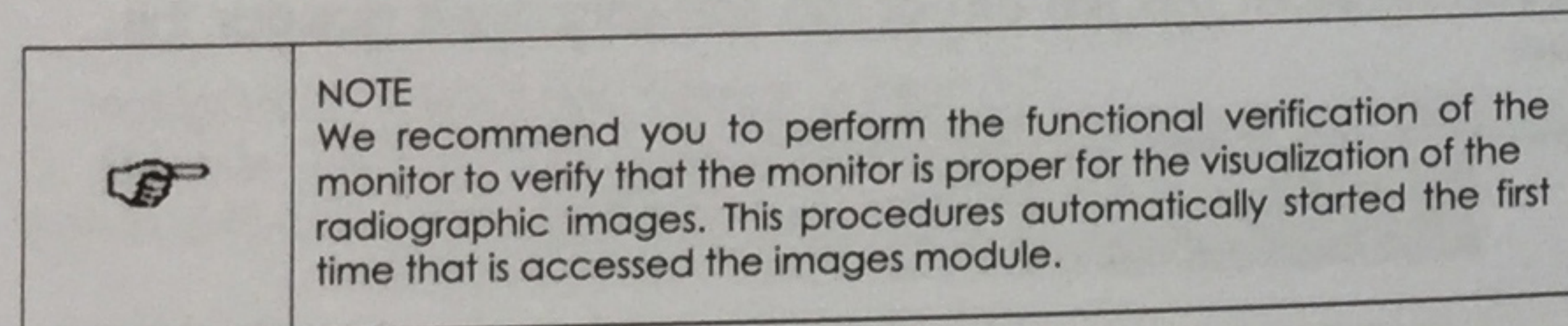
The application will ask to you the preferred language.



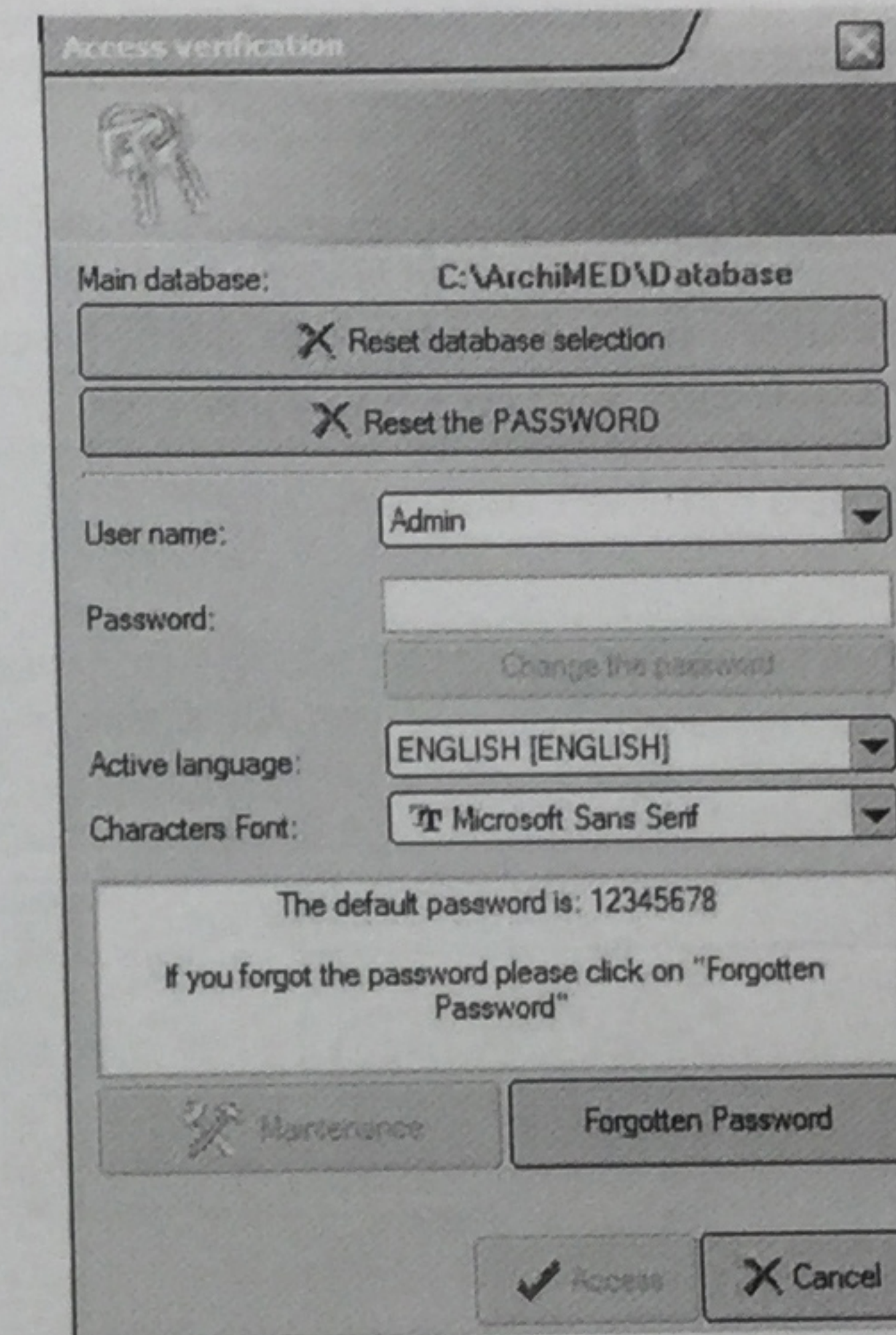
Select your preferred language and click on OK
Then, if you don't have installed the demo database, this window will open



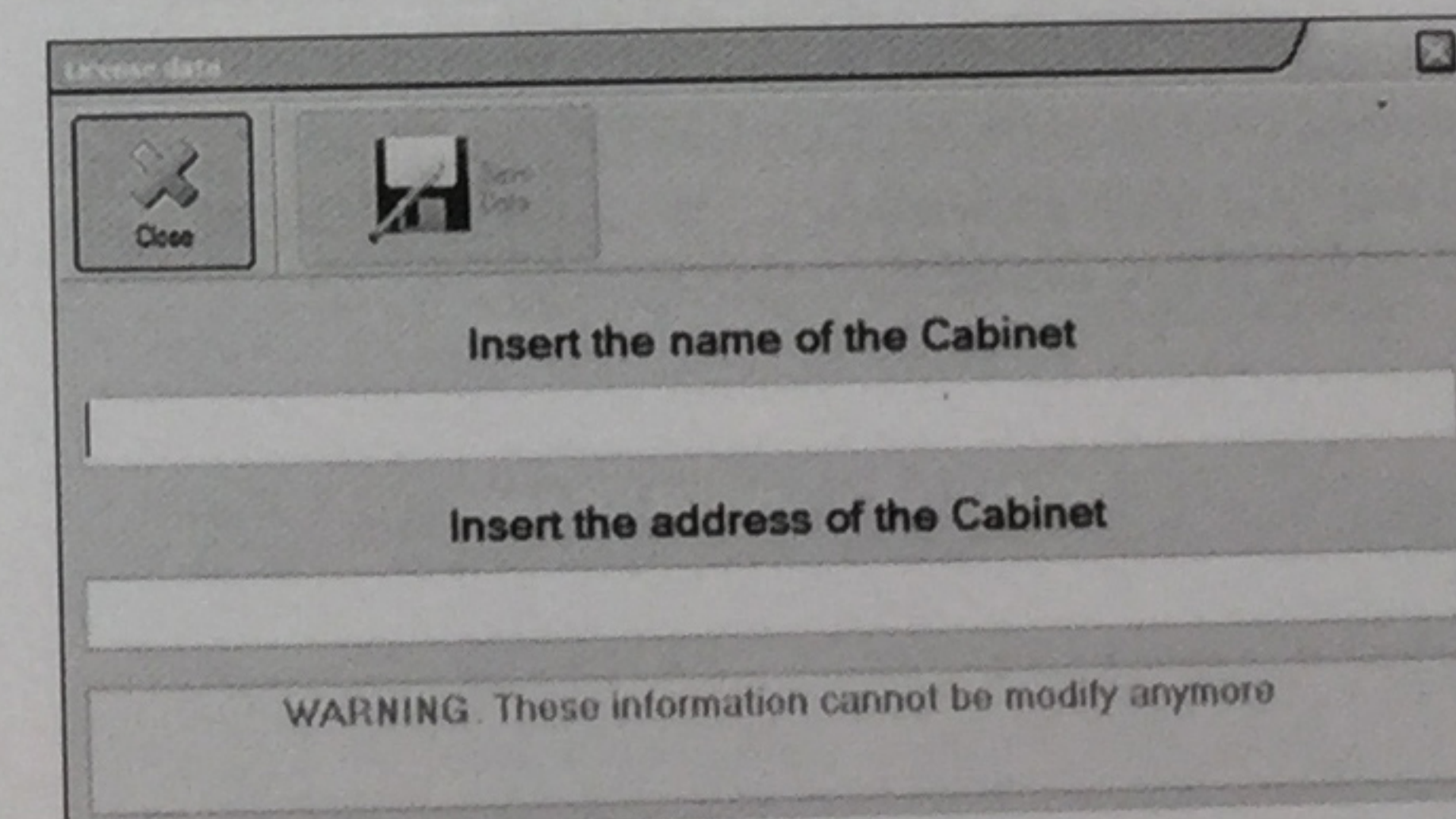
Click on Yes and ArchiMED Suite® will automatically create the environment for begin

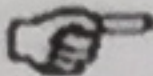


At the first access at the program, you'll see this window



If you don't have registered the application yet, the follow window will be displayed.






NOTE

If you are using the software on the PC that is not the final one, please do not fill the above data.

You can enter now your cabinet data. If you don't want to write the data now, click on Close. This window will be displayed every time you open the application, until you insert the data. Please remember that you cannot change the registration data after you store them in the hardware protection key, so do not register any information before it is agreed with the customer.

If you are running for the first time ArchiMED Suite®, the password is 12345678. Right after the program will you ask for change it, using this window

New Password



OK

Cancel

The password use expired. Please insert a new one

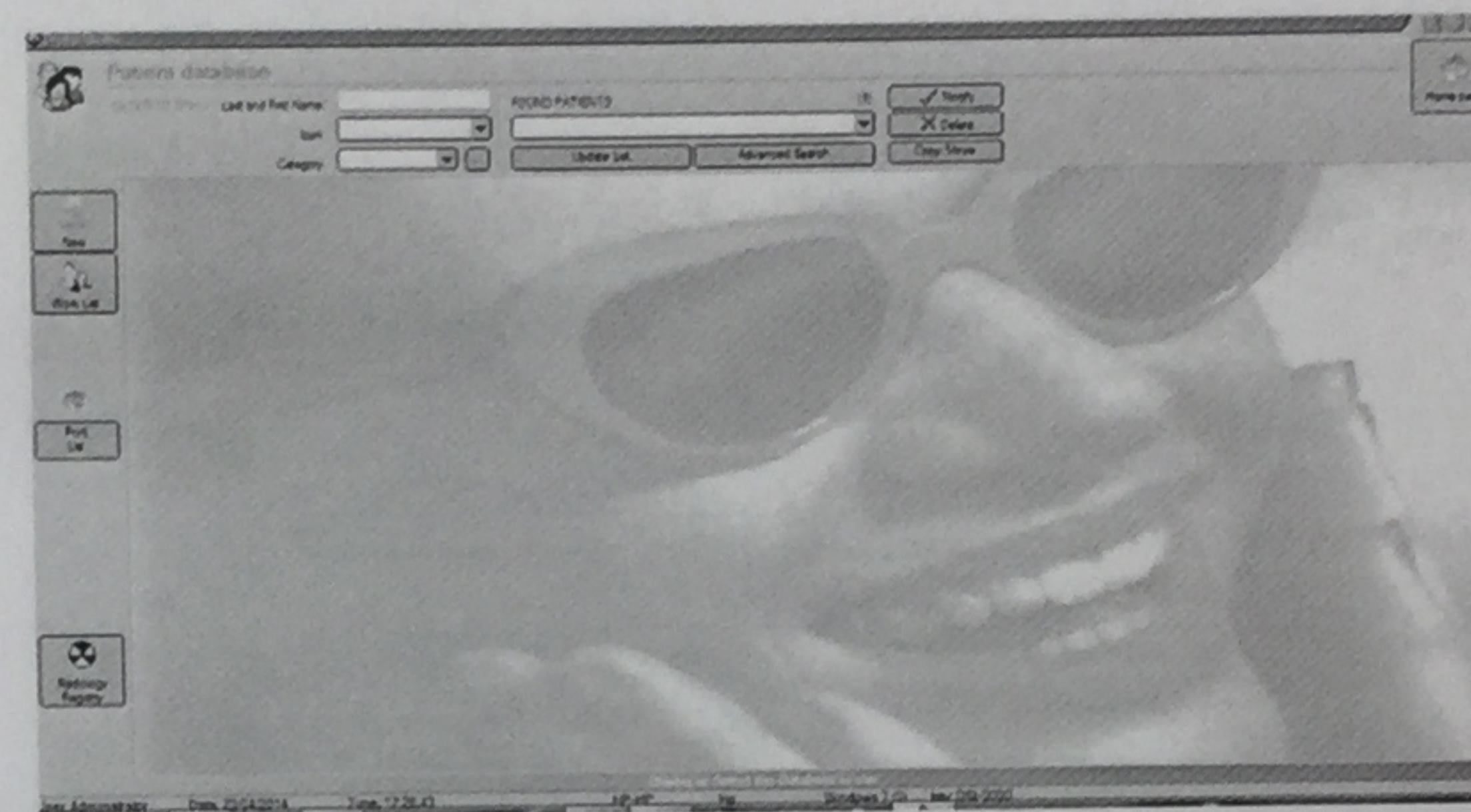
Old Password:

New Password:

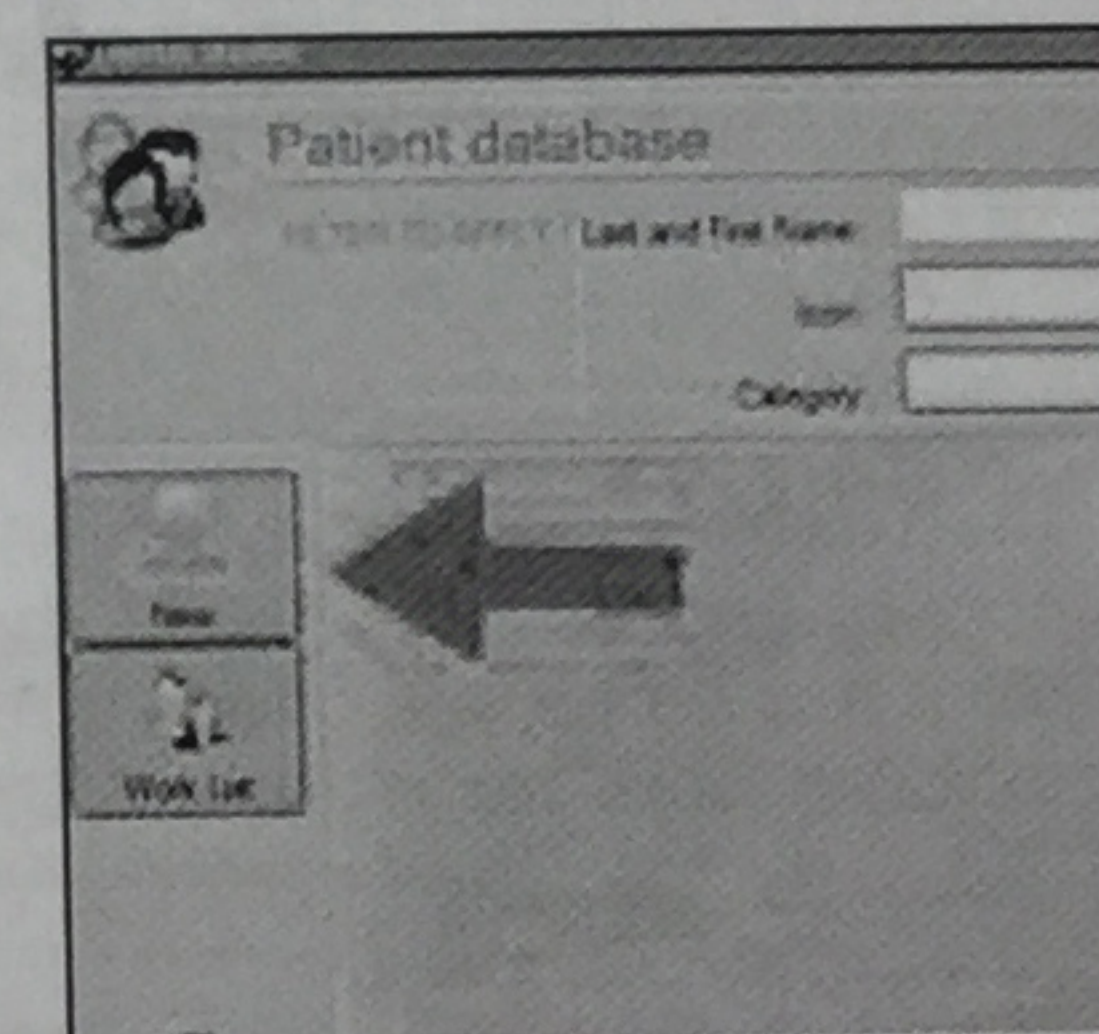
Confirm Password:

Insert the old password one time, then the new for two times. Click on OK then insert the new password in the above window. Click on Access to enter in the program.

Accessing Archimed Suite its main window will appear.



To configure properly the software, you must create a new dummy patient; click on New as showed on the next figure.



The following windows will be displayed

To create a new patient you must insert some important information. The needed information are highlighted with a darkest colour: name, last name, birth date. It is possible to complete these data in another moment too.

Before save a new patient you have to select the destination database (only if you have more than one active database). Click on the destination database and an arrow near the database icon will appear.

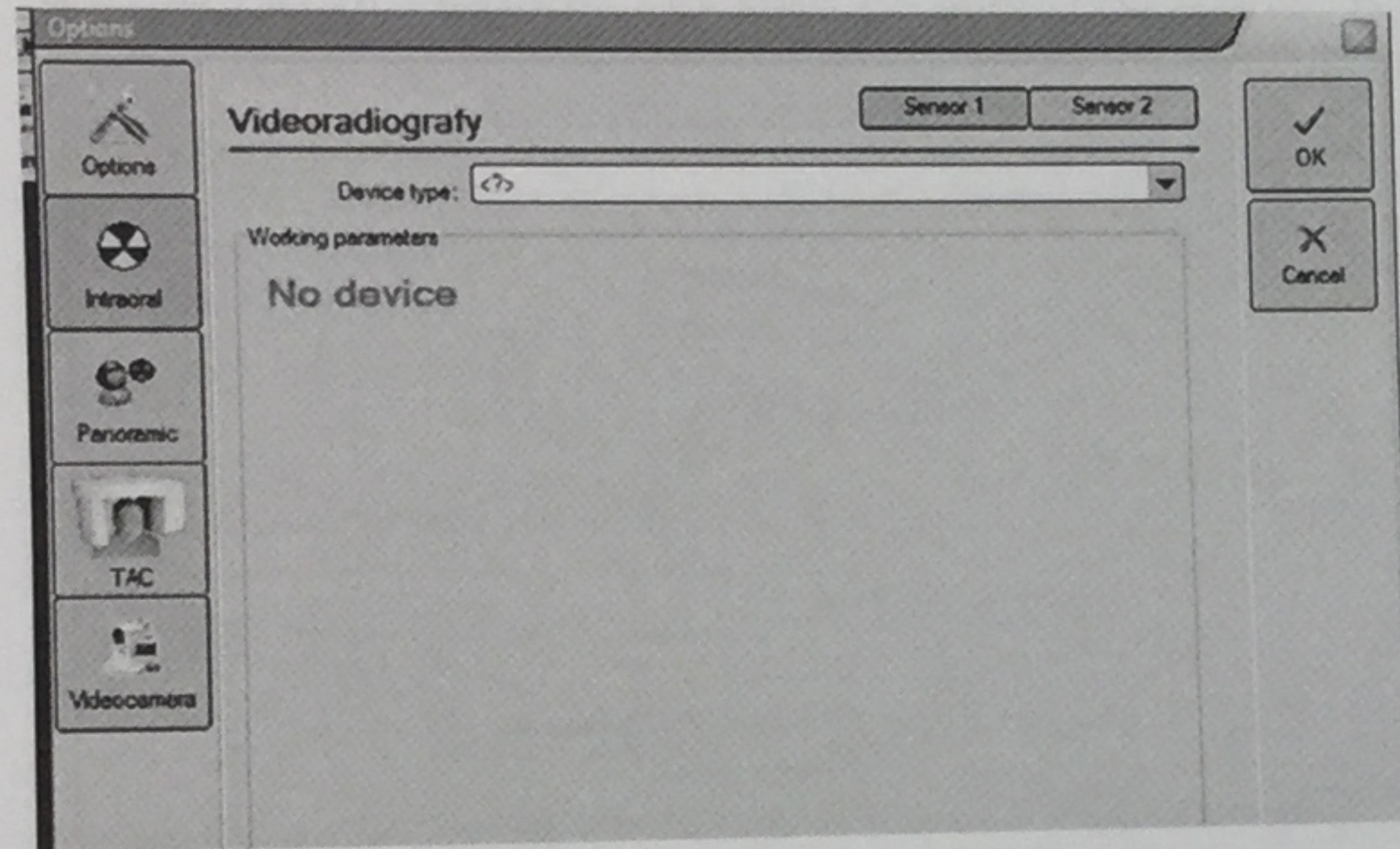
We suggest you to create a dummy patient, named Dummy Dummy on the following example.

Click on Save to save it and the following window will be displayed, where you have to click on "Images" to access the image acquisition module.

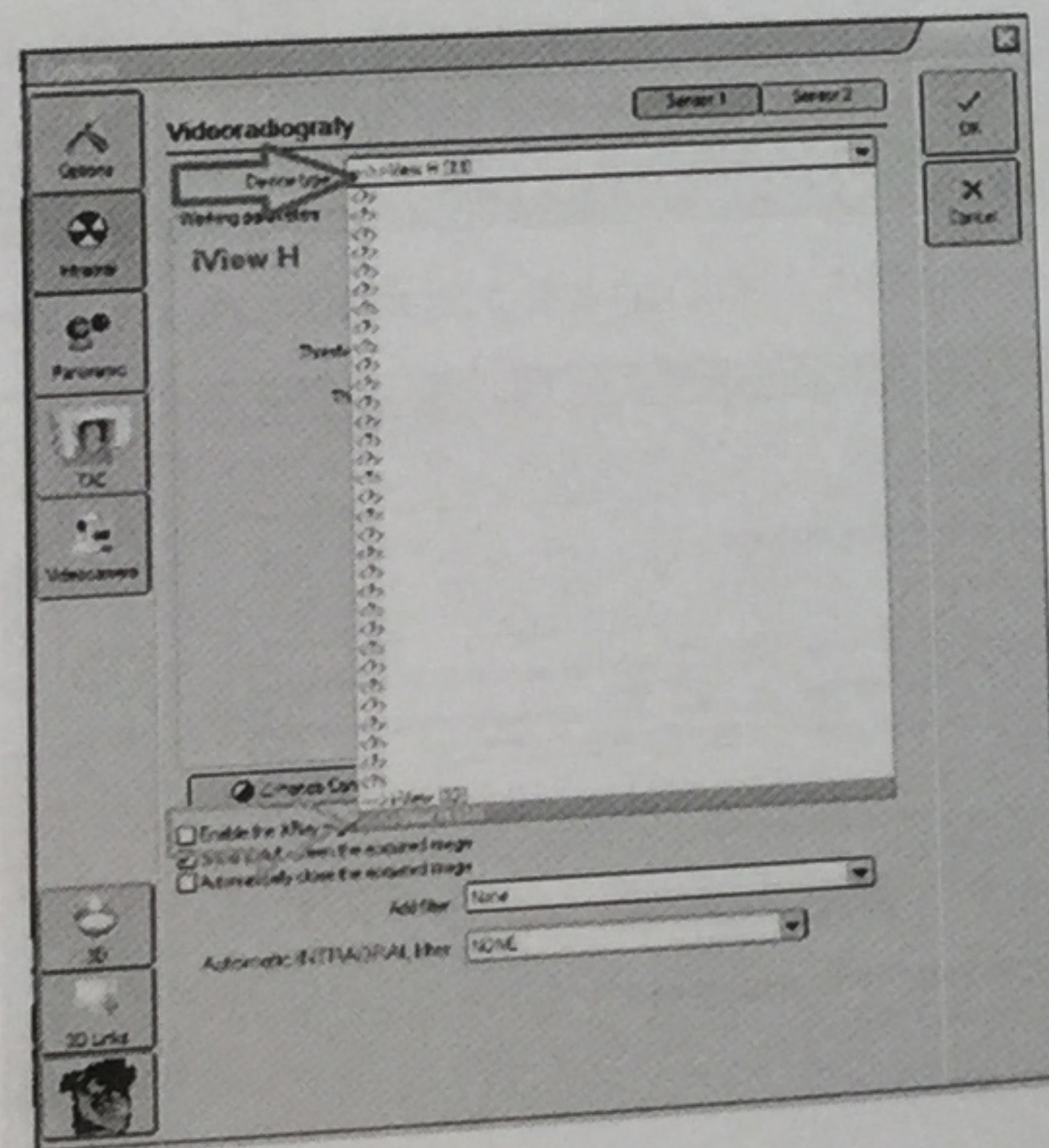
On the Image main module screen, click on "Options"

On the "Options" windows, click on Intraoral button, as showed.

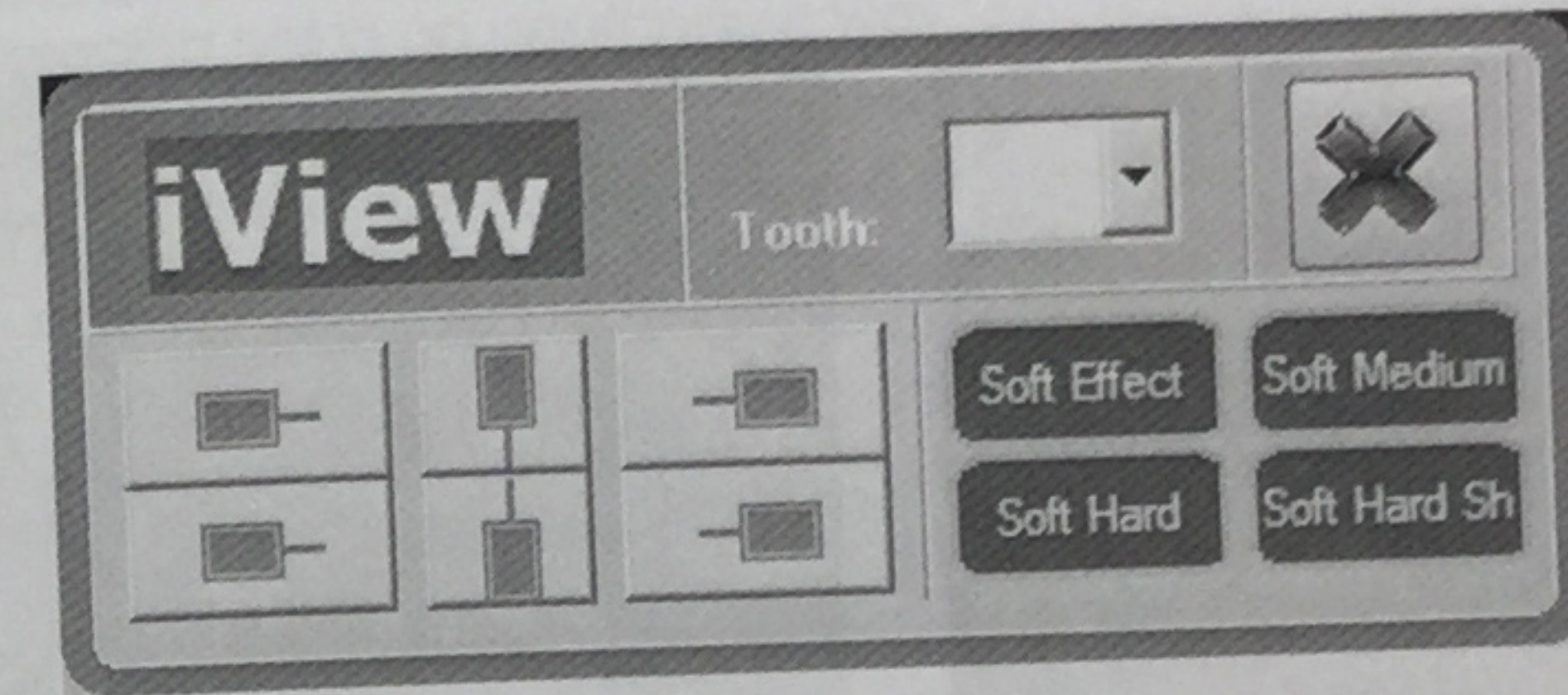
The following image shows that no device has been selected.



Click on the down arrow "v" of "Device Type" to select a list of available sensor types. Scroll down the list up to "I-VIEW H" as displayed on the following figure, and save the selection by clicking to "OK" and return to main acquisition window.



Now, selecting the Intraoral 1 button, the acquisition screen will be displayed.



Once performed the emission, the sensor status windows will become green, as follow:

