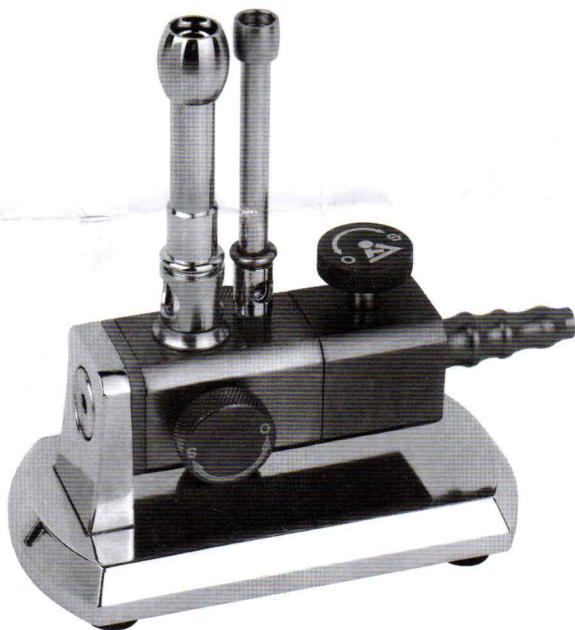
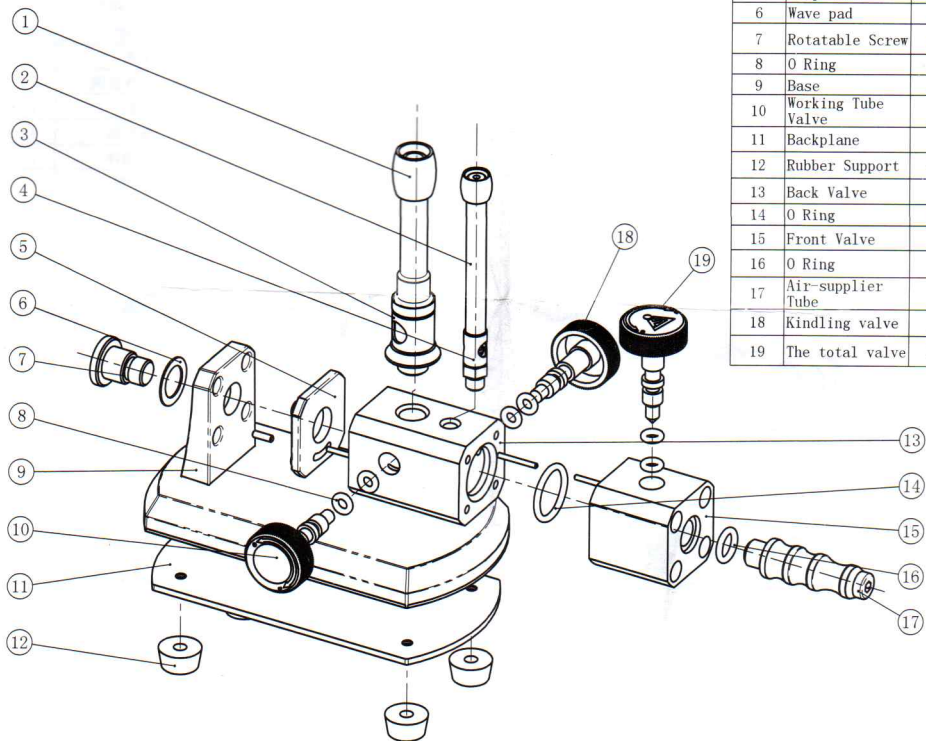




## JT-25 Rotatable Gas Lights Exploding Diagram(NEW)



# JT-25 Rotatable Gas Lights Exploding Diagram(NEW)



Serial No.	Item No.	Q' ty
1	Working Tube Kit	1
2	Kindling Tube Kit	1
3	Flame adjustment Ring(L)	1
4	Flame adjustment Ring(S)	1
5	Clapboard	1
6	Wave pad	1
7	Rotatable Screw	1
8	O Ring	6
9	Base	1
10	Working Tube Valve	1
11	Backplane	1
12	Rubber Support	4
13	Back Valve	1
14	O Ring	1
15	Front Valve	1
16	O Ring	1
17	Air-supplier Tube	1
18	Kindling valve	1
19	The total valve	1

This is the latest ,energy-saving gas lights with best configuration . Patent expected to get approval soon. It comes with below-mentioned specifications:

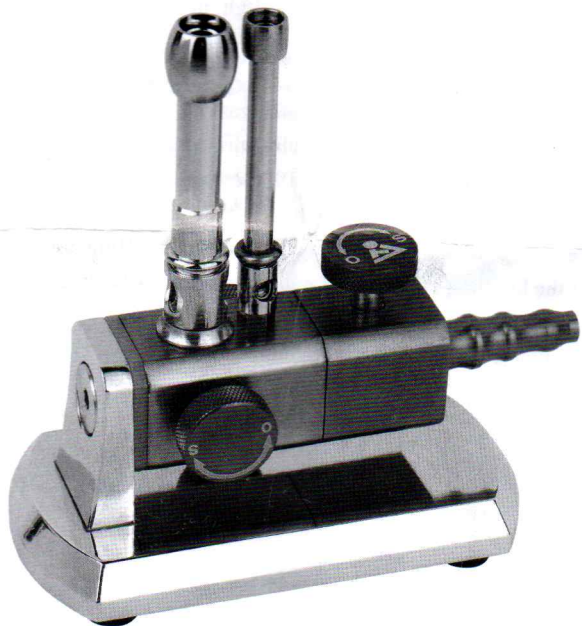
- 1, It can rotate 30 degree freely from left or right. It works well both for left-handed and right-handed
- 2,Kindling Tube and Working Tube work separately . They both have their own controlling system .It make this gas light save energy .and with single-tube and double-tube function
- 3,Distinguished controlling system ensures the gas light never leak gas during working

#### Operation Manual

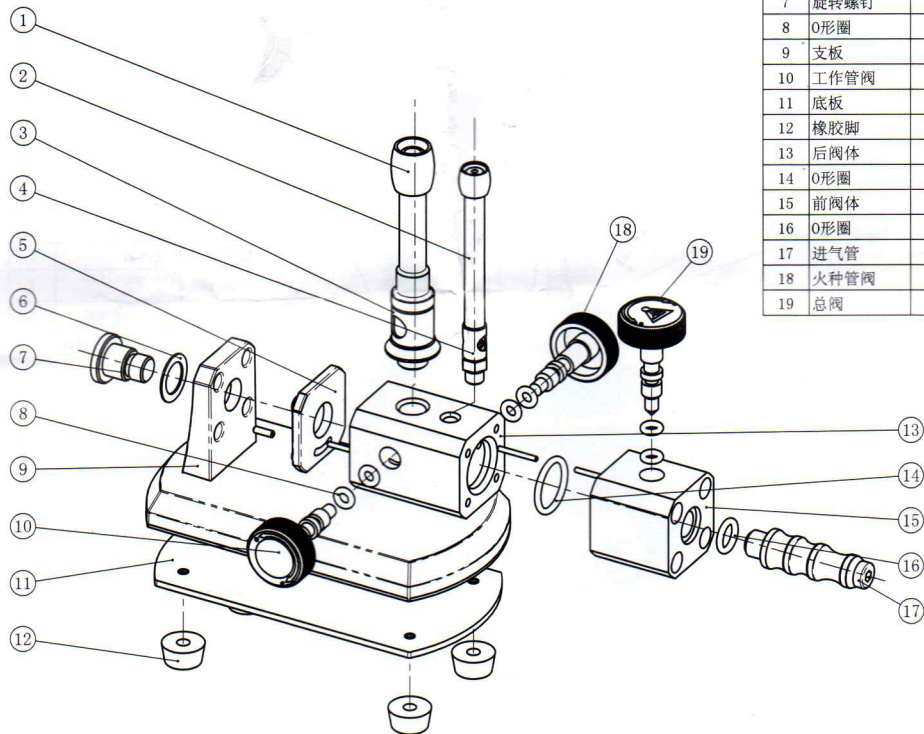
1. Pls turn off 10/18/19 valves before connect with gas
- 2, Connect the gas supplier with Air-supplier tube, turn on gas-supplier valve. After confirming that no gas leak , turn on the air-supplier valve 19. then turn on the kindling valve 18 slowly. Make the fire on ,turn on the working tube valve 10, then adjust the working flame
- 3,Control the flame strong/weak by controlling flame adjusting Ring 3/4
- 4, You can turn off the kindling valve to make it working in single tube
- 5,Remember to turn off fires and all valves after duty off
- 6,This gas lights is suitable for Bottled or pipeline Nature Gas/Coal Gas/Oil-gas



# JT-25 双管煤气灯使用说明书



# JT-25 煤气灯(新)爆炸图



序	零件号	数量
1	工作管总成	1
2	火种管总成	1
3	火焰调节圈大	1
4	火焰调节圈小	1
5	隔板	1
6	波形垫	1
7	旋转螺钉	1
8	O形圈	6
9	支板	1
10	工作管阀	1
11	底板	1
12	橡胶脚	4
13	后阀体	1
14	O形圈	1
15	前阀体	1
16	O形圈	1
17	进气管	1
18	火种管阀	1
19	总阀	1

这是一款目前最新颖, 结构最合理、最节能的煤气灯。  
实用新型结构专利正在申请、批复中。

- 一、可以向左右各旋转30度, 人性化的设计支持左右不同的操作习惯。
- 二、火种管与工作管相对独立, 有各自的阀门控制系统, 既节能同时又兼备单管、双管分别使用的功能。
- 三、与众不同的控制系统, 最大限度地保证了工作中不会泄漏气体。

## 使用方法

- 1、接入液化气前, 将三只阀门⑩⑱⑲全部关闭。
- 2、将气源接入进气管, 打开气源阀门, 确定无气体泄漏后, 先旋开进气阀⑲, 然后稍微旋开火种阀⑱, 用明火点燃, 并调节火焰, 再稍微旋开工作管阀⑩引入火种, 并调节工作火焰。
- 3、大、小火焰调节圈③④往上或往下可以调节火焰的软硬, 以适用为宜。
- 4、正常工作时可以关闭火种阀⑱使之单管工作。
- 5、工作完毕, 须将所有气阀全部关闭, 明火熄灭。
- 6、本产品适用气体: 罐装及管道液化石油气、煤气、天然气。