

MULTIFUNCTIONAL HEATER

专用水印

专用水印

专用水印

专用水印

INSTRUCTIONS

专用水印

专用水印

专用水印

专用水印

MODEL: MH-01

VERSION NUMBER:2020

PUBLICATION DATE: AUGUST, 2020

专用水印

专用水印

专用水印

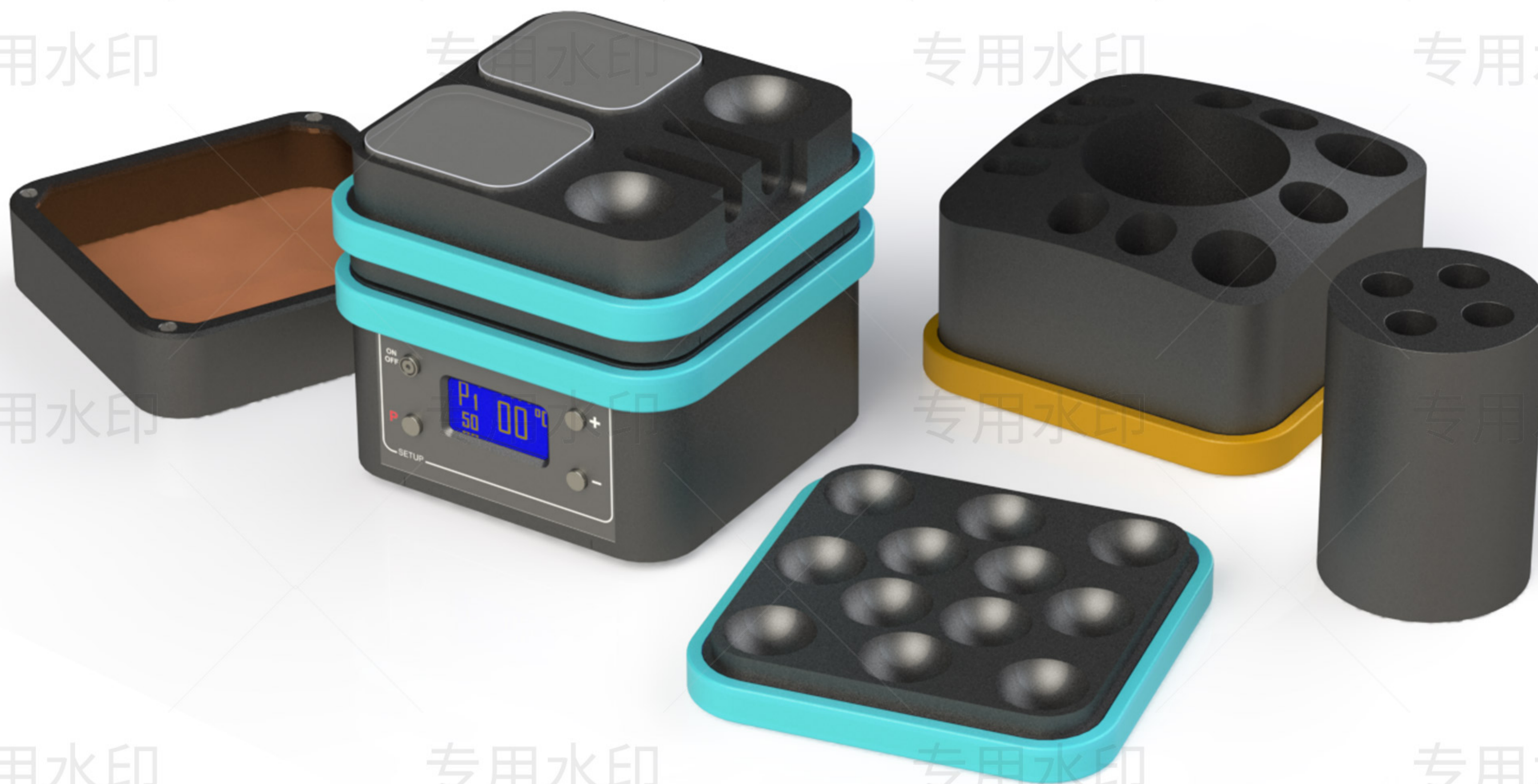
专用水印

专用水印

专用水印

专用水印

专用水印



专用水印

专用水印

专用水印

专用水印

专用水印

专用水印

专用水印

专用水印

专用水印

专用水印

专用水印

专用水印

专用水印

专用水印

专用水印

专用水印

专用水印

专用水印

专用水印

专用水印

CONTENTS

专用水印

专用水印

专用水印

专用水印

01- PRODUCT INTRODUCTION

02- SCOPE OF APPLICATION

专用水印

专用水印

专用水印

专用水印

03- PRODUCT PERFORMANCE

04- STRUCTURE AND COMPOSITION

专用水印

专用水印

专用水印

专用水印

05- SCHEMATIC

06- PRODUCT SPECIFICATIONS

专用水印

专用水印

专用水印

专用水印

07- OPERATION GUIDE

08- INSTRUCTIONS FOR USE

专用水印

专用水印

专用水印

专用水印

**MAINTENANCE,
09- AND STORAGE METHOD**

10- FAULT ANALYSIS

专用水印

专用水印

专用水印

专用水印

11- PRECAUTIONS AND SAFETY WARNING

12- CONNECTING LINE

专用水印

专用水印

专用水印

专用水印

1 【PRODUCT INTRODUCTION】

This product has the characteristics of rapid heating, long service life, small and exquisite appearance, easy to carry and store, simple operation, low energy consumption, high efficiency, and long-term constant temperature.

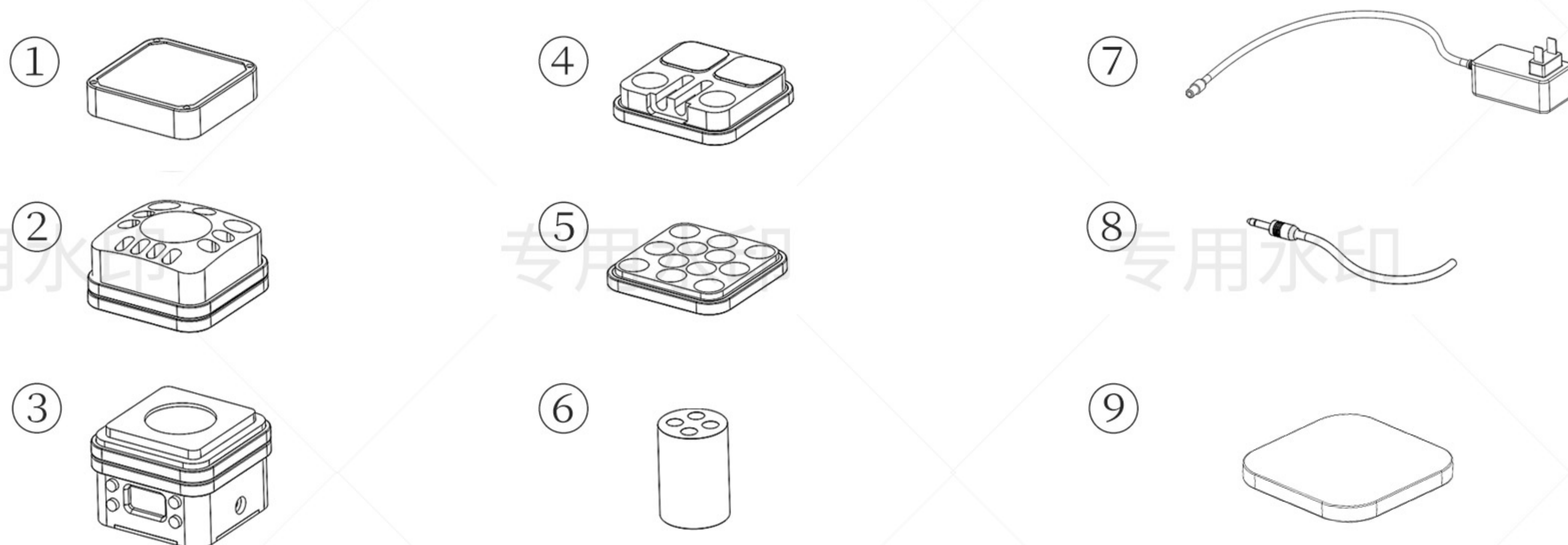
2 【SCOPE OF APPLICATION】

This equipment is suitable for heated medical resins, anesthetics, injection nozzles, etc.

3 【PRODUCT PERFORMANCE】

This heater is designed with different heating trays for heating materials of different materials and appearances, which can be replaced at any time as needed, and the heating temperature can be adjusted arbitrarily, with precise and intelligent temperature control and constant temperature.

4 【STRUCTURE AND COMPOSITION】



① Filter cover

② External temperature probe

③ The heater body

④ Integrated tray of bulk resin and resin capsule

⑤ Patch tray

⑥ Anesthetic tray

⑦ Power adapter

⑧ External temperature probe

⑨ Tempered glass sheet

5 【SCHEMATIC】



6 PRODUCT SPECIFICATIONS

enter:	220V 50Hz~60Hz	Use environment temperature:	5°C~35°C
Output:	24VDC2A	temperature range:	RT+5°C~100°C
monitor rate:	26W	Temperature control range:	≤±0.3°C
Temperature mode (P):	36°C 45°C 70°C 100°C	main body size (L×W×H):	75mm×75mm×60mm
Heating time in temperature mode:	20" 50" 2分钟 3分50"	net weight:	1.17KG
Shading range:	<500nm		

7 【OPERATION GUIDE】

- ① Place the main body of the heater control box on a flat surface;

② Insert the DC plug of the power adapter into the DC power socket of the heater control box, and then plug the other end of the power adapter into the external power socket; at this time, the power is turned on, the heater indicator on the display is always on, and the heater stands by for heating;

③ Press the temperature setting increment/temperature setting decrement key to adjust to the required heating temperature setting, or press the temperature range mode selection key to set.

④ Press the heating button, the main body starts heating, and the heating indicator light starts to flash. Press the heating button again, the main body will turn off the heating, and the heating indicator will stop flashing and become a constant light. The default temperature of the heating body is the set temperature of the last use;

⑤ When the temperature reaches the preset temperature, the heater will automatically emit a sound alarm, and the heater will stop heating to maintain a constant temperature.

⑥ In the case of uninterrupted power, the heater will always maintain the preset/set temperature constant temperature state.

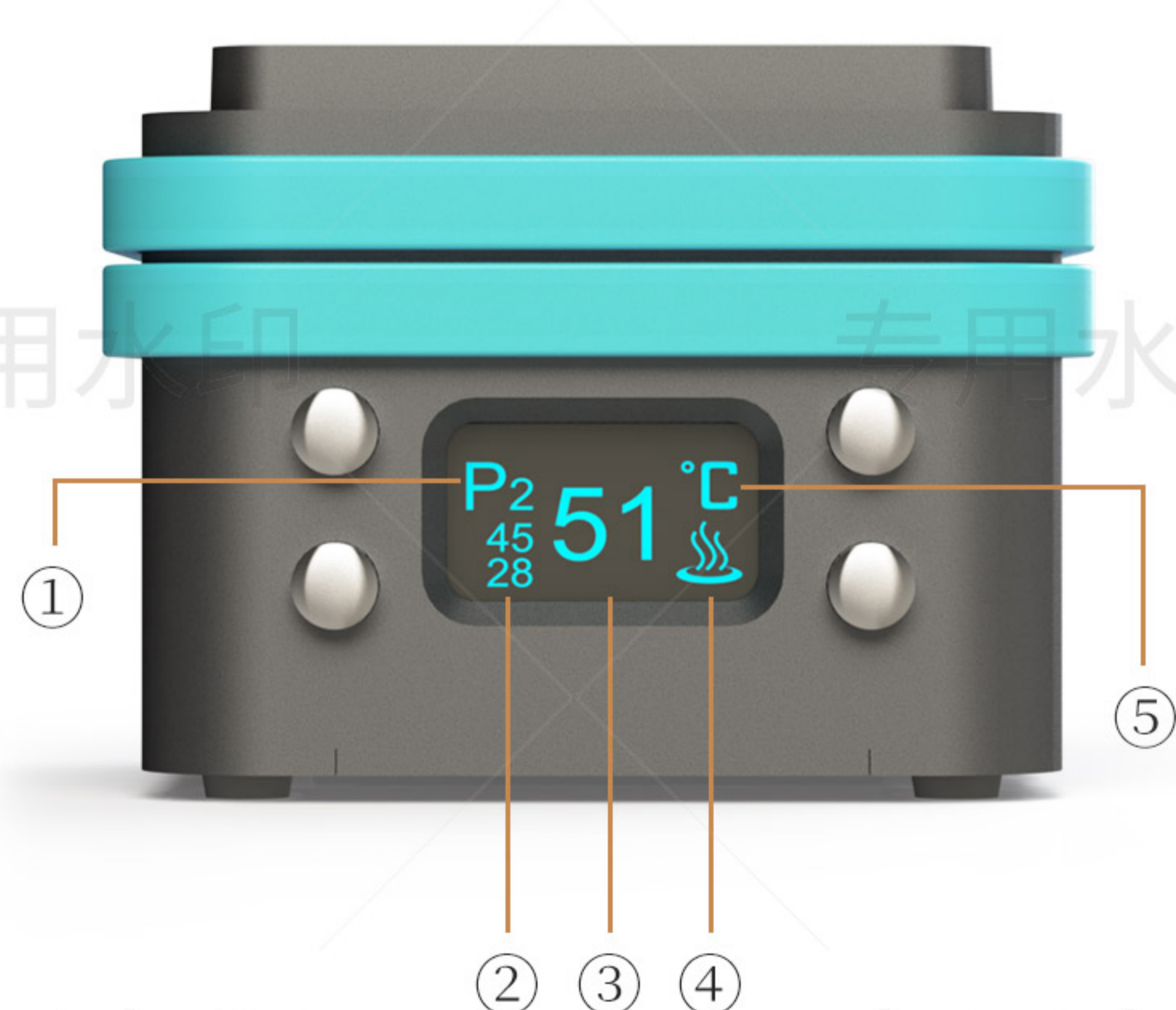
⑦ Insert the external temperature probe into the main body interface, and the other end touches the surface to be measured. At this time, the measured temperature value will be displayed on the lower left of the display screen.

8 【INSTRUCTIONS FOR USE】

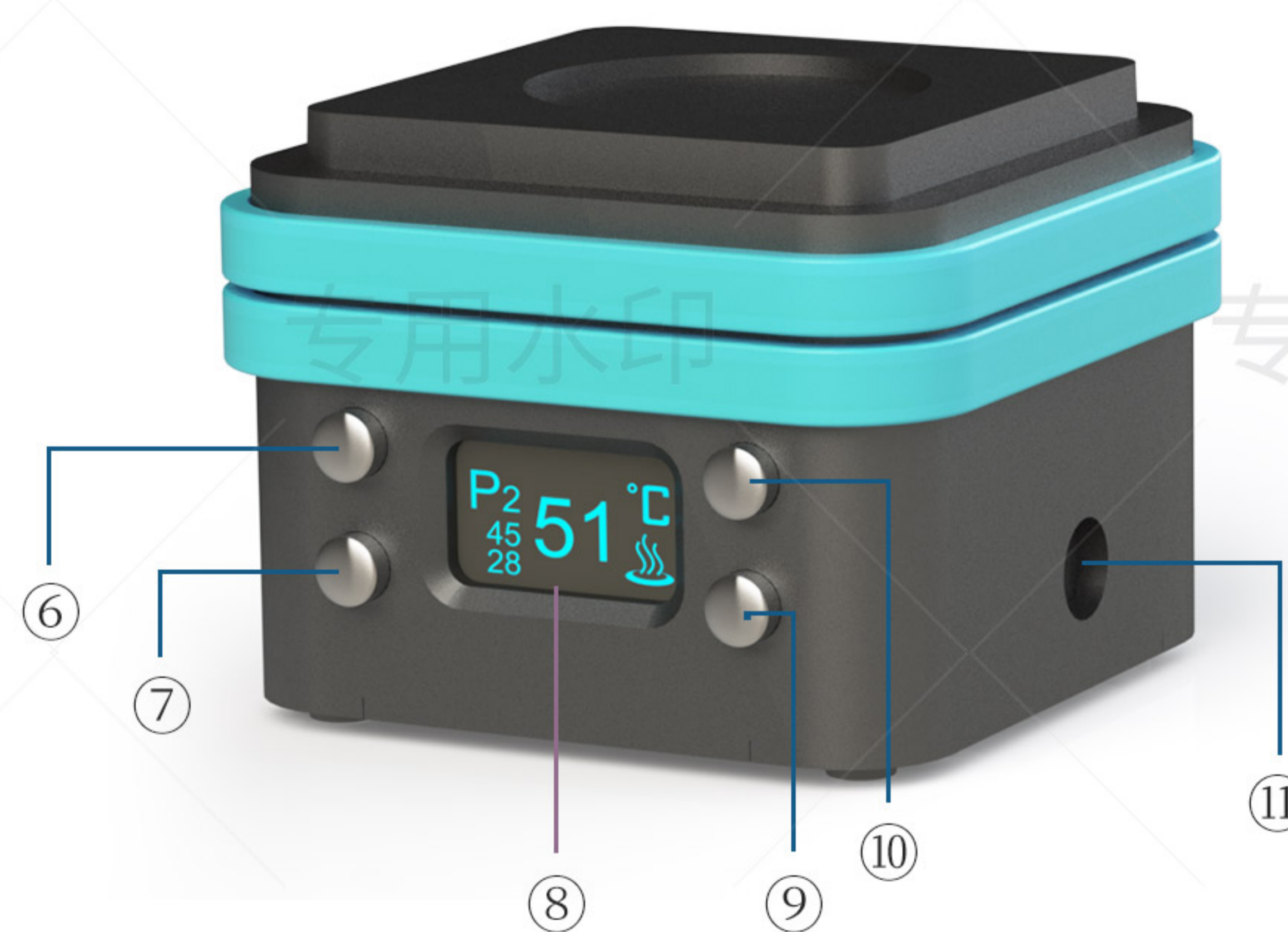
1. This product is for indoor use.

2. When this product is used in cold regions, it is normal that the overall heating time will be extended by 1 to 3 minutes.

3. All the buttons of this product should avoid gravity pressing to avoid damage to the buttons.



- ①. Temperature mode display constant day display
- ②. External temperature control measurement display
- ③. Heating temperature display
- ④. Heating indicator light
- ⑤. Temperature unit display
- ⑥. The temperature range mode selection key



- ⑦. Heating on/off button
- ⑧. Display
- ⑨. Temperature decreasing button
- ⑩. Temperature increment button
- ⑪. External temperature control probe interface

9 【MAINTENANCE, AND STORAGE METHOD】

- ①. The heater and tray can be scrubbed and disinfected with alcohol cotton balls. Do not soak the whole machine in any liquid for cleaning and disinfection. High temperature and high pressure sterilization is strictly prohibited.
- ② The cleaned whole machine is put into the box after the surface is thoroughly air-dried, and it should be placed in a dry and ventilated place. Do not place it in a humid and dusty place, so as not to cause a short circuit of the circuit board control board inside the heating main body
- ③ Avoid placing this product in places with corrosive gas or strong magnetic field interference, and keep it away from heating, fire and all other heat sources to avoid sensor failure.
- ④ When loading the carton, avoid pressing the keys of the heating body for a long time, which may cause the keys to fail

10 【FAULT ANALYSIS】

FAILURE PHENOMENON	ANALYSIS	APPROACH
The display does not light up	Power is not connected, circuit failure	Check the power supply, re-plug the power supply, if the display is not on, please contact the supplier or manufacturer
The display flashes	circuit failure	Contact with suppliers or manufacturers
Module does not heat	Heater failure	Contact with suppliers or manufacturers
The key does not work	Button failure	Contact with suppliers or manufacturers

11 【PRECAUTIONS】 AND 【SAFETY WARNING】

PRECAUTIONS

- ①. Avoid scratching the heating body and various heating trays during use;
- ② If the composite material to be heated sticks to the heating body or heating tray, it must be thoroughly cleaned:
- ③ To avoid cross-infection, do not reuse the used heating body and heating tray before disinfection.
- ④ The heating body and heating tray cannot be used as a non-stick mixing pad

SAFETY WARNING

- ①. It is strictly prohibited to use this product for other purposes:
- ② Heating the main body and the tray will produce high temperature after heating. Avoid direct contact with limbs to avoid high temperature burns:
- ③. If you have any questions, please contact the customer service staff in time. It is forbidden to disassemble and repair by yourself:
- ④ After use, the main body and tray should cool down before cleaning, disinfecting and storing. When cleaning and disinfecting, the power of the instrument must be turned off to avoid personal injury due to electric shock.
- ⑤. If you have any questions, please contact the customer service staff in time. It is forbidden to disassemble and repair by yourself:
- ⑥. Do not hit the display with sharp objects or press the display with gravity to avoid damage to the display