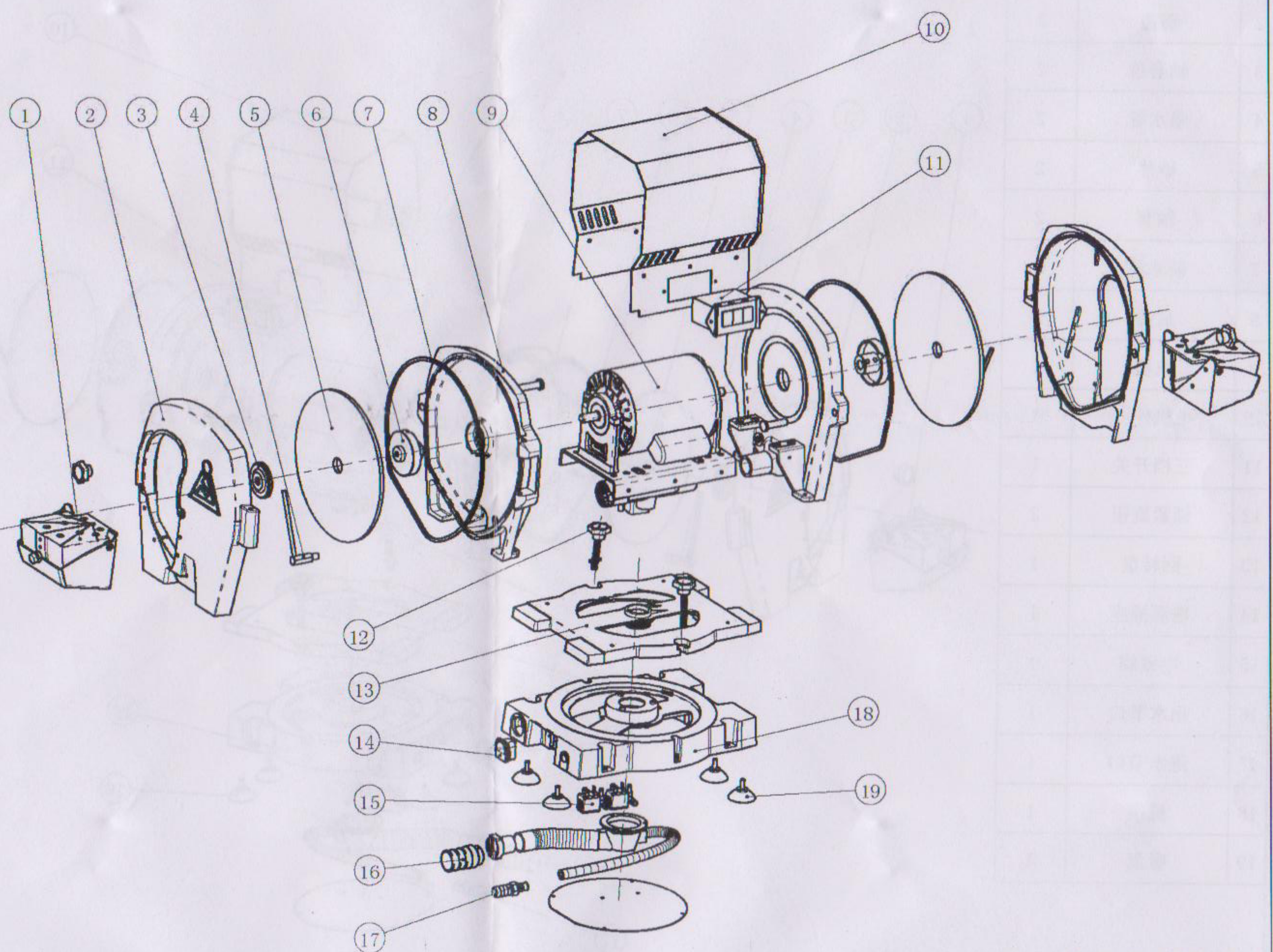


No.	spare parts	QTY
1	water storage	2
2	front cover	2
3	shaft sleeve cover	2
4	water spray tube	2
5	wheel chip	2
6	shaft sleeve	2
7	water proof gasket	2
8	back cover	2
9	electric motor	1
10	electric motor cover	1
11	three gears switch	1
12	knob	2
13	rotary plate	1
14	power socket	1
15	electromagnetic valve	1
16	water outlet	1
17	water inlet	1
18	engine base	1
19	sucker	4

JT-19S Two-heads Model Trimmer



JT-19S Two-heads Model Trimmer

This is a new developed Two-heads Model Trimmer with resin and diamond wheel chip at both ends for satisfying various trim demands.

Fix the engine base (18) at a selected place with the sucker (19) or setscrews. (Operate it on the opposite side of the water inlet & outlet tubes as well as the power cable.)

Insert power cable to the socket (14), connect the water inlet tube to the inlet spigot (17) (Control by the inner electromagnetic valve (15) and work with electric motor in synchronism), then connect the water outlet tube to the outlet spigot (16).

Tighten the knobs (12) at the two sides, press the on-off in front of the working side to start job. If needs to turn the working direction, at first press the middle off-switch, loose the knobs, make the machine to a 180-degree turn, and still need to tighten the knobs. (Attention : Must press the on-off after the wheel chip stop absolutely.)

After finishing work, must turn off power, close water inlet, clean and maintain the machine duly.