

# **USER MANUAL**

***EM-LT5***

***Dental Workstation***

## Description:

The EM-LT5 Dental Workstation provides the ultimate working environment for dental lab technicians. The workstation consists of lighting system, dust retraction system, electric system, air nozzle, shelves, pans, and elbow rests. It has the latest designs and steel-wood structure. The tabletop is made of fireproof board, the table foot is adjustable to make the tabletop level with the ground. The workstation is equipped with high quality drawer tracks which are smooth to open. The high power suction motor achieves excellent suction results and low noise at the same time. The new adjustable light arm allows easier operations and brighter views. The international standard power outlets can be used with all types of plugs.

## Specifications:

Voltage	AC 220/110V 50/60Hz ±10%
Power	850W
Dimensions	1600x600x850(mm)

## Installation:

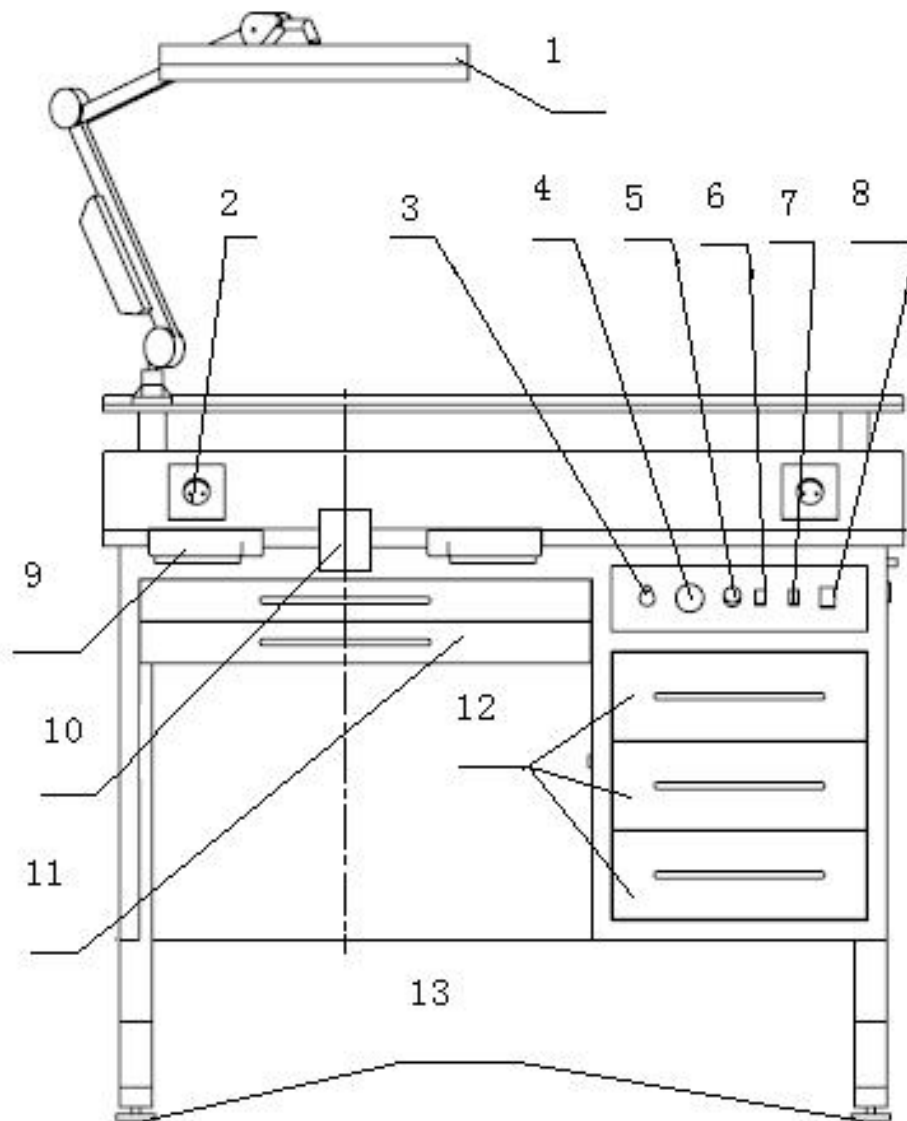
For transportation reasons, some parts from the workstation are packed separately. Please check if all the parts are in the package before installation. The power outlet and air pipe being used must be compatible with this workstation. The power must be properly grounded. After removing the packages, adjust the table foot to make the tabletop level with the ground. Make sure there are no leaks in the pipes. The power of the dust collector is adjustable, the dust collectors have to be stopped for cooling after working for 1 or 2 hours continuously. Too much dust in the dust collector may affect the suction results, dust bags should be changed regularly. If strange noise can be heard from the dust collector please stop using and check for problems. Connect the connector of the light to the connector on the table, and then fix the light to the tabletop. If the table needs to be moved, do not lift by the tabletop or drag, please lift by the steel frame.

**NOTE: THE LIGHT AND DUST COLLECTOR SHOULD BE SWITCHED OFF AFTER USE. TURN DOWN THE POWER OF THE DUST COLLECTOR EACH TIME TO AVOID HIGH POWER CONSUMPTION AFTER TURNED ON. KEEP THE DUST FILTER BAG CLEAN REGULARLY.**

## Accessories:

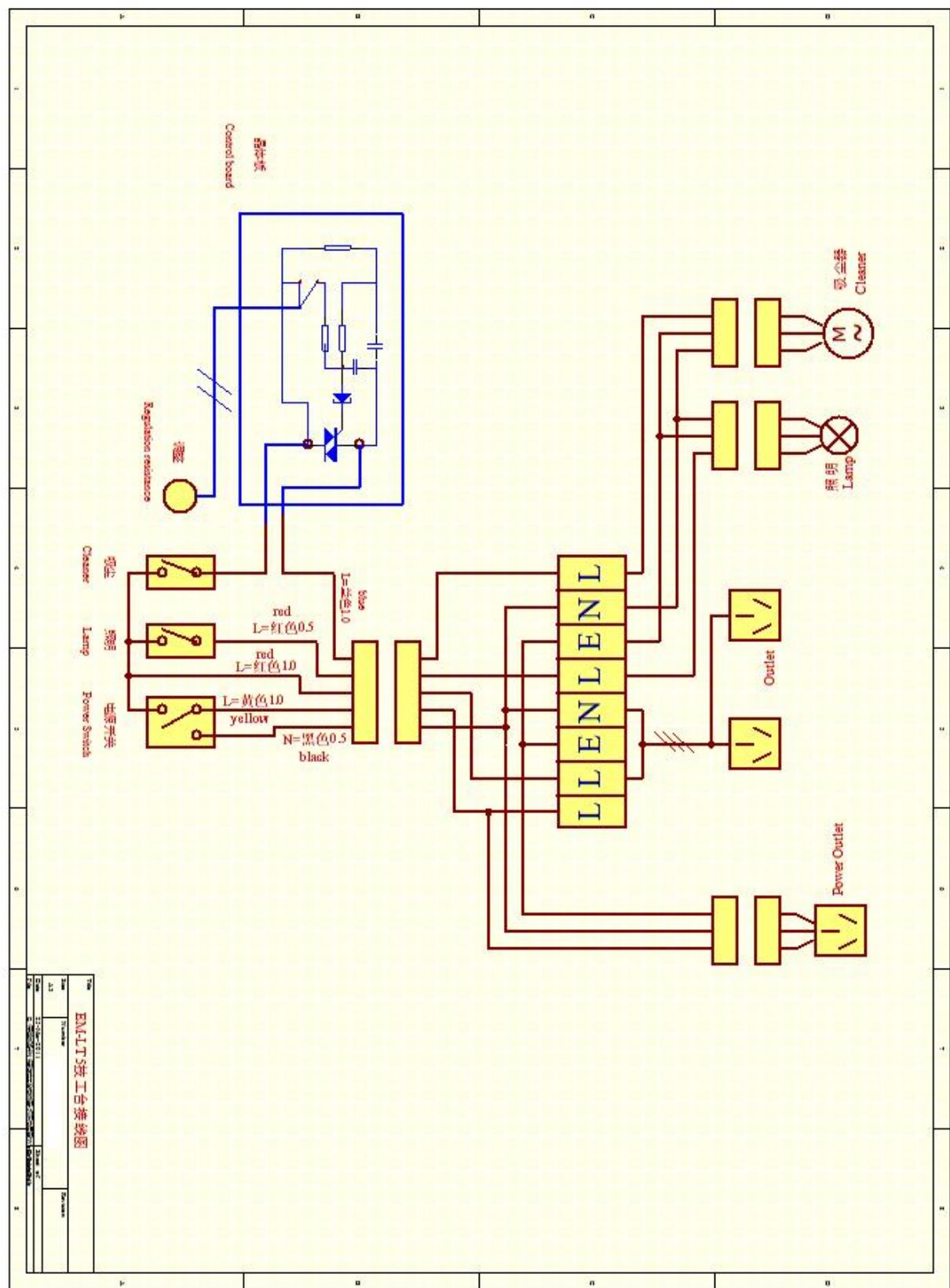
User manual	1pcs
Power cord	1pcs
Fuse tube	2pcs

**Diagram:**



1. Light	9. Arm rests
2. Power socket	10. Air inlet
3. Air nozzle	11. Upper drawers
4. Pressure gauge	12. Side drawers
5. Suction power regulator	13. Table foot (adjustable)
6. Dust collector switch	14. Steel plate
7. Light switch	
8. Power switch	

Circuit Diagram:



## Dust Collector Cleanup

After some time, the dust collector may be not as quiet as before, therefore a complete clean up is required.

### Procedures:

Open the cover.



Clean the dust bag with water to keep it permeable.



Clean the white insulation foam filter



Take out the board



Clean the non-woven fabric filter which is under the board



Clean the motor by extracting dusts from the hole in the center with another dust collector.

