

Reflector For Orthodontics TR-DPM03+

Instruction maual

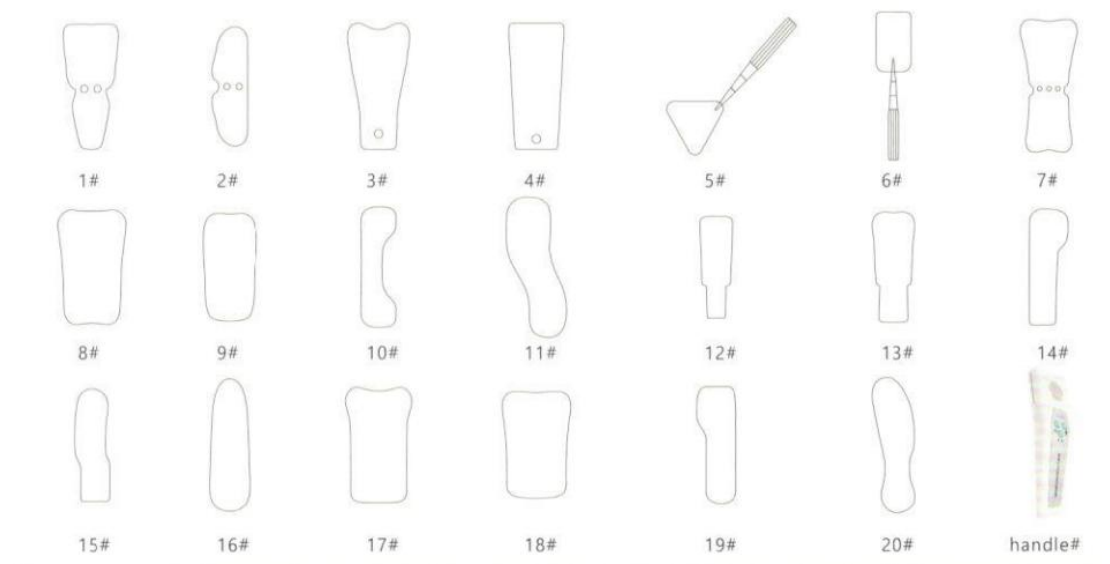


Description

Oral orthodontic treatment, auxiliary device. One side is a mirror, made of stainless steel materials. Non-sterile, reusable.

Expected use

Used in orthodontic treatment, using the mirror reflection principle, to assist physicians to take oral photos.



Instructions

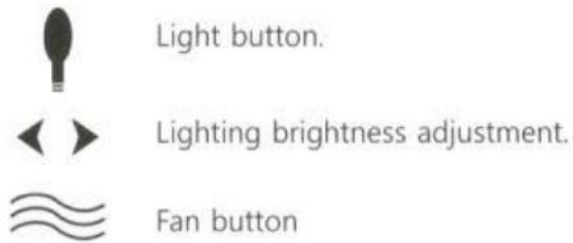
Reflector handle # for orthodontic use:

1.1, With a hair dryer and LED light source, used in conjunction with a reflector,

1.2, Handle can be connected with devices with USB interface for

charging.

1.3, Description of panel keys:



When there is no operation, after two minute, the machine will go to sleep and save power. The four indicator lights and button lights will be off. You can exit the power- saving state through the wind or the button of the light. In addition.

Models

1. The device is non-aseptic packaging, SO it must be cleaned and sterilized before and after use:

2. The mirror is recommended to adopt high temperature and high pressure steam pressure method or 75% alcohol immersion and wipe disinfection. Handle# cannot be disinfected by high temperature and pressuremethod.

3. Cleaning/ sanitizing should use appropriate cleaner/disinfectant,

avoid to use cleaners or household detergents containing acidic,corrosion, because of household cleaning agent to remove blood protein effect, may cause the residual dirt attached to the instrument and equipment corrosion, about the use of cleaner/disinfectant dosage, time and temperature should refer to the requirements of the relevant instructions on the use of the detergent/disinfectant manufacturers.

4. It is recommended to clean the equipment immediately after use. If the dirt solidifies and remains on the device, it will reduce the disinfection and sterilization effect and risk corroding the device. Try to avoid flushing the device with hard water and use treated water for flushing.

5. It is recommended to use automatic cleaning equipment for processing:

Proper placement of instruments (extending the attachment of instruments, especially long or narrow holes such as tubes and intubations for insertion)

The inlet temperature shall not exceed 45°C

To ensure that the cleaning process can completely remove all residual dirt, cleaning time at least 10 minutes.

After cleaning, the equipment should be removed from the cleaning machine in time. Do not put the equipment in the cleaning machine all night.

6. Use manual cleaning (only when there is no automatic cleaning machine);

When cleaning metal instruments, choose appropriate cleaning agents and brushes (do not use metal brushes, SO as to avoid damage to the surface of the instruments), and rinse thoroughly with running water to ensure that the surface of the instruments is washed clean of residue and dirt.

7. After cleaning, make sure to wash with deionized water to avoid residual calcium substances on the equipment and leaving marks.

8. After cleaning, it should be dried in time. For the equipment with movable connection.

9. Defective instruments (such as cracks, deformation and wear) should be replaced in time.

10. Made of stainless steel equipment shall not be immersed in physiological salt solution (such as sodium chloride solution), long:

term contact will lead to equipment corrosion (iting) or stress corrosion cracking.

11. The user is responsible for the equipment and materials in the actual operation as well as the top results achieved by the operator during the operation. It is usually necessary to confirm the requirements of the operation method and conduct daily monitoring.

12. Before waste disposal, products must be cleaned, disinfected and sterilized.

13. Handle# should pay attention to waterproof, only suitable for indoor use.

14. The mirror storage, use and cleaning disinfection should pay attention to protect the mirror, handle with care, avoid mixed with other equipment.

Storage: The mirror should be stored in a clean room with relative humidity of no more than 80%, non-corrosive gas and good ventilation.