

Dental Units-TR-SDU01



1.Lamp tube connecting column installation

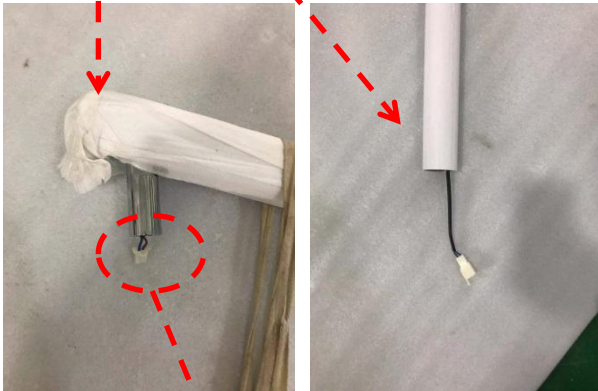
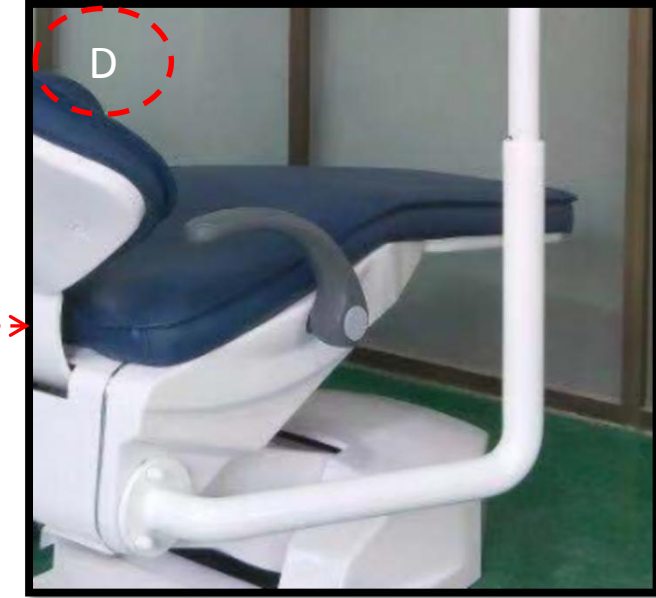
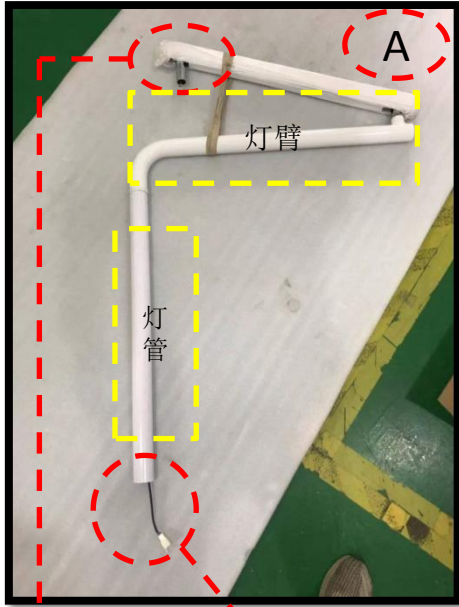


Connecting pipe installation:

- A. Prepare A 12MM hex socket and screws (machine configuration)
- B. Fix the connecting pipe one by one to the holes of the chair frame (do not tighten).
- C. Determine the longitudinal level of the chair frame bottom plate
- D. Place the level at the top of the connecting pipe to adjust the longitudinal level consistent with the bottom plate and tighten the three fixing screws.
- E. Finally, cover the screws with the white cover buckle.



2. Install the lamp arm



Pull the lamp connector position line until it is just exposed

2: Lamp arm installation:

- A. First, connect the arm with the lamp tube and pull the power cord out of the bottom of the lamp tube (the hole in the lamp tube is the bottom)
- B. Connect the arm line with the reserved line of the connecting pipe. (The wire must be plugged into the connecting pipe after docking)
- C. Insert the lamp tube into the connecting position, align the hole of the lamp tube and the fixing hole of the connecting tube (tighten with reserved screws).
- D. The picture is shown after the lamp arm is installed

3. Oral lamp installation



3: oral lamp installation:

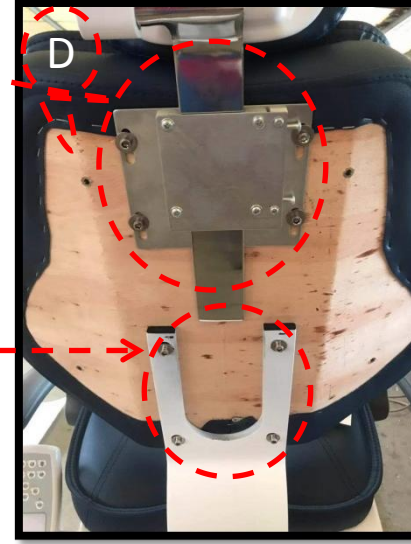
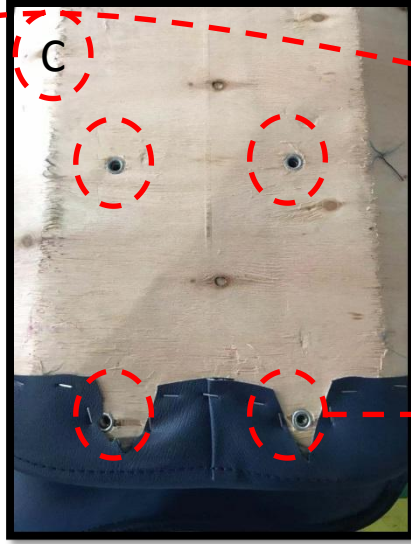
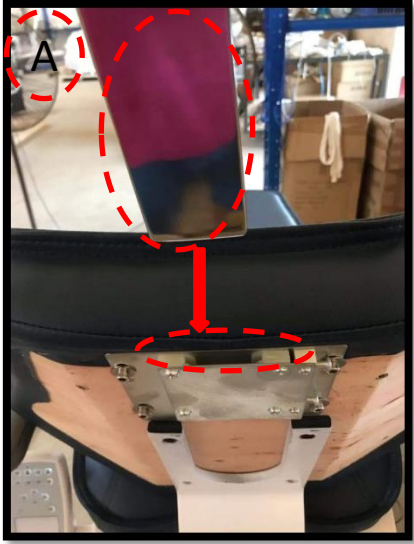
A. Take out the oral lamp, install the decorative ring of the oral lamp first, connect the plug of the oral lamp with the plug of the arm of the lamp (plug the wire into the connector after docking)

B. Insert the oral lamp into the arm connector. The arm mounting hole corresponds to the fixing hole of the arm connector and tighten the screws with reserved screws and working screws.

C. Figure after tightening.

D. Complete picture of connecting pipe, lamp arm and mouth lamp after installation

4. Installation of backrest and headrest



4: Headrest back installation:

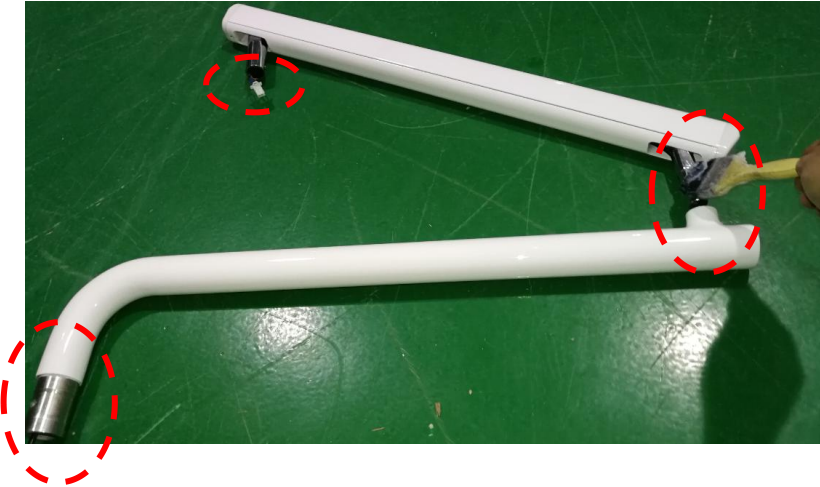
- A. Take out the headrest and remove the back shell.
- B. Insert the headrest pillar into the installation slot corresponding to the backrest headrest skateboard.
- C. Remove the screws reserved for backrest mounting holes
- D. Tighten the screws with four mounting holes corresponding to the bend plate of 5MM hex.
- E. Install the backrest shell on the backrest with a Phillips screwdriver (reserved screws)
- F. Effect drawing of back headrest after installation

Installation Guide of Lamp Arm and Oral lamp



1. Apply lubricating oil and install lamp arm joints

1. 2P plug length: only the length of a plug is exposed, and the excess wire is pulled back;



2、

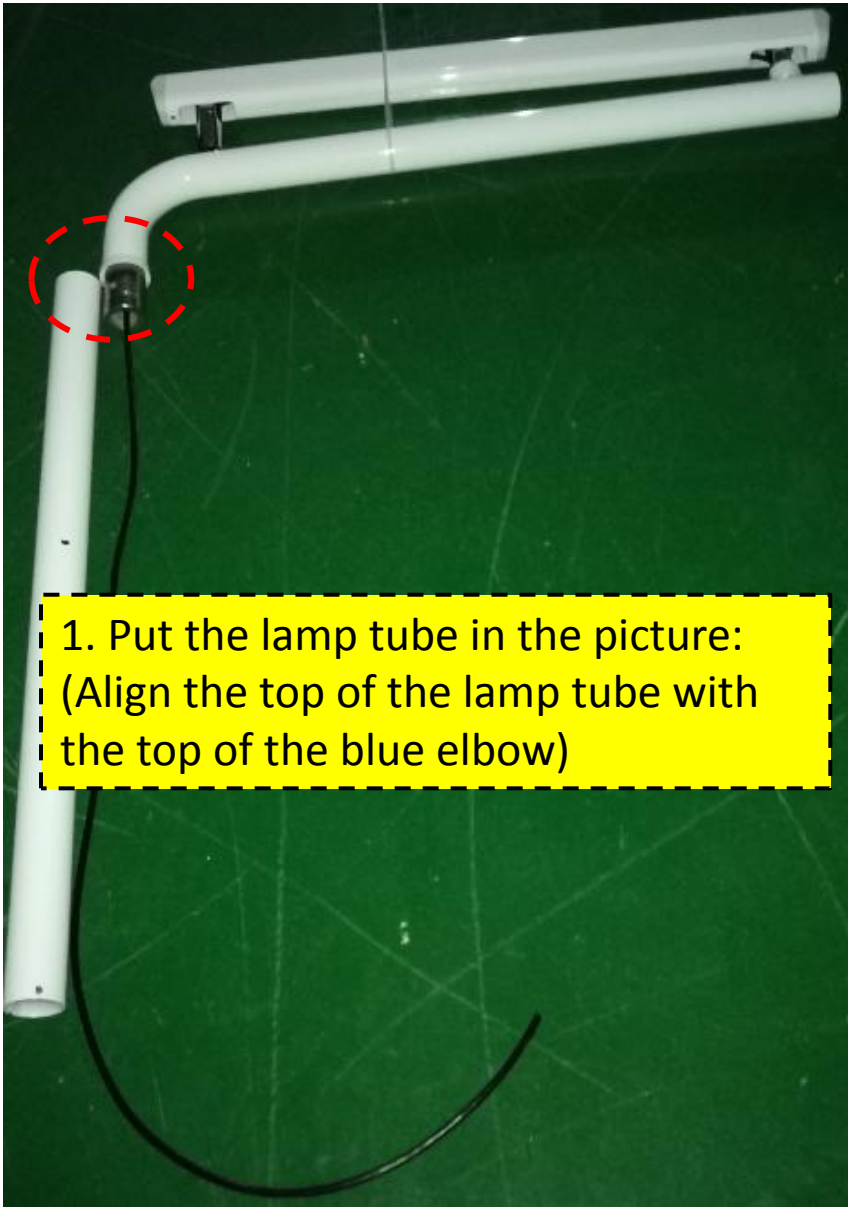
- A. Tighten the joint pin of the lamp arm (large) with a large screwdriver;
- B. Apply lubricating oil to the middle joint;

3、Insert joint;

4、As shown in the figure;

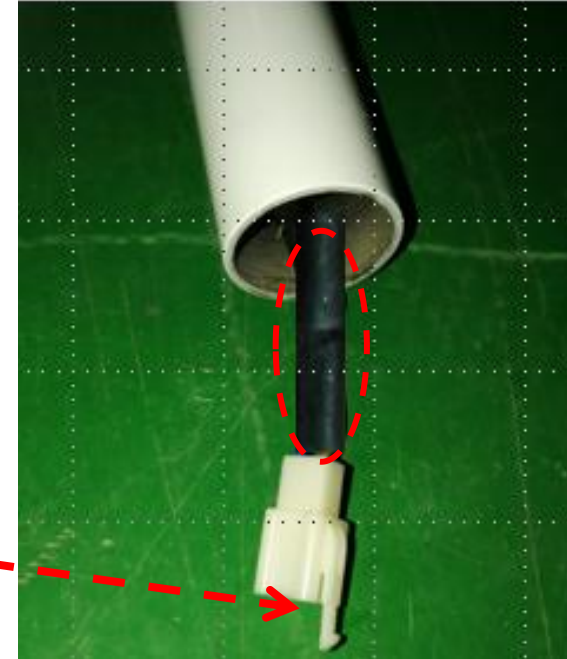
- A. Tie a cable tie or rope around the lamp arm as shown in the figure;
- B. The end of the big joint into the special tube decoration ring;

2. Determine the length of the lamp arm wire and install the terminal plug:



2, as shown in the picture, leave 6 cm, the excess cut off;

3, here first set a section: 5 cm long, diameter of 6mm heat shrink tube;



4, crimping terminal plug:

- A. Press two 2.8 (male) terminals; (Crimp according to terminal crimp instructions)
- B. with 4P2.8 (male) insert;
- C. brown at the top and blue line at the bottom, the terminal into the 4P plug has a groove on the side;

5. Push the heat shrink tube to the 4P plug and shrink it with a hot air gun;

3. Install the lamp arm on the instrument arm



1, check the lamp decoration ring:
no burr;



2. As shown in the picture,
A. Connect the pair;
B. Before installing the lamp
tube, put the plug in the bottom
hole as far as possible;
C. Insert the lamp tube;



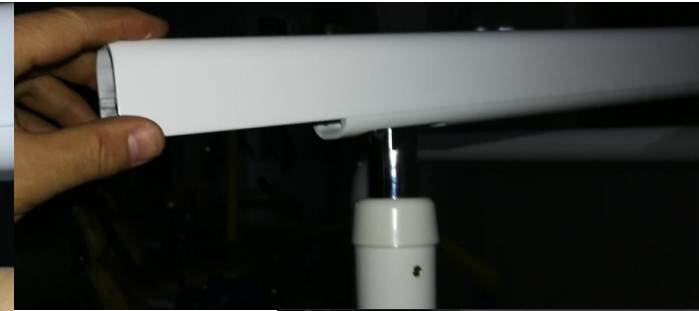
3. Lock with one M4x10
countersunk wire screw as
shown in the picture;

4. Install oral lamp and adjust the arm elasticity of lamp



1, installation of oral lamp:

- A. Prepare the mouth lamp according to the order requirements;
- B. Put in the corresponding decorative ring;
- C. Connect the plug;
- D. Insert the plug downward into the joint hole of the oral lamp as far as possible, and then upward into the oral lamp;
- E. Lock with one M5x8 stainless steel hex socket screw;



2. Adjust the elasticity of the lamp arm;

- A. Remove the screws on the end cover of the lamp arm with a Phillips screwdriver;
- B. Lift out the end cover of the lamp arm as shown in the picture;
- C. Pull out the lamp arm lock cover by hand;
- D. Adjust the elastic force clockwise with a special wrench;

Elastic standard: the lamp arm can stay in any position within the travel range;