

Air Sterilizing Atomizer

TR-ASA01



WARNING! TO REDUCE THE RISK OF FIRE, ELECTRIC SHOCK, OR PERSONAL INJURY, READ ALL THE INSTRUCTIONS BEFORE USING THIS HUMIDIFIER, AND FOLLOW THE INSTRUCTIONS!

BE SURE TO SAVE THIS MANUAL FOR FUTURE REFERENCE

Thank you for purchasing this humidifier from . This fan has been manufactured to ensure, safety reliability and ease of use to help you create the optimum growing environment.

CAUTION: Keep this instruction manual safe for future reference, and the box for storage when not in use.

Please read the instruction manual carefully before use to avoid serious injury.

IMPORTANT INSTRUCTIONS

When using the humidifier, basic electrical safety precautions should always be followed.

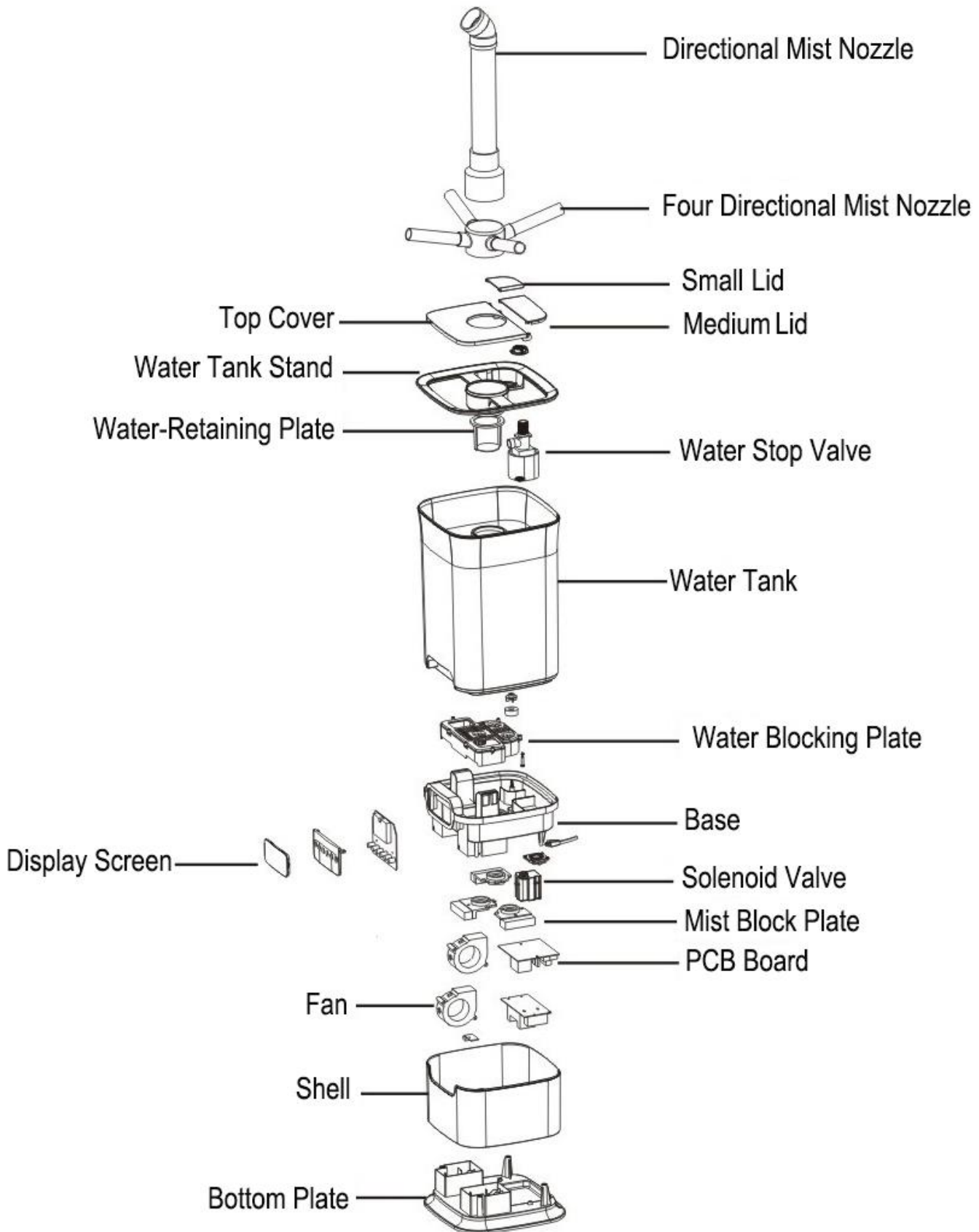
WARNING: TO AVOID THE RISK OF ELECTRICAL SHOCK, FIRE OR INJURY TO PERSON, ALWAYS MAKE SURE THE PRODUCT IS UNPLUGGED FROM THE ELECTRICAL OUTLET BEFORE RELOCATING, SERVICING, OR CLEANING IT.

- Read all the instructions before using the humidifier
- Use this humidifier only as described in this manual. Anything outside the guidelines is not recommended, may cause fire, electric shock or injury to persons
- Ensure all packaging is removed before use
- Check the power cord and plug regular for damage. If the power cord or plug is damaged, **DO NOT** use. It must be replaced by manufacturer or a qualified person in order to avoid an electrical hazard
- **DO NOT** pull the cord too hard as it could damage and fray. If it becomes damaged after a prolonged use it should be repaired by a qualified technician
- Ensure that the voltage used corresponds to the voltage indicated on the rating plate
- **DO NOT** allow the power cord to touch hot surfaces and **DO NOT** place near hot gas or electric burners
- Place the humidifier on a flat, level surface away from direct sunlight
- **NEVER** operate the unit without water

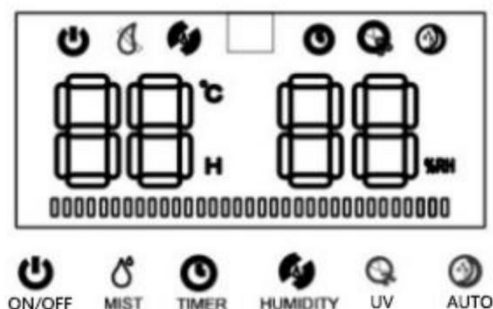
- Use only clean, cool water to fill the tank. (If you have hard tap water, it is strongly suggested to use distilled water)
- During operation, rotate the mist nozzle so it aims away from children, walls and furniture
- This product is intended for household use **ONLY** and not for commercial, industrial or outdoor use
- **DO NOT** add medication of any type into the nozzle, base or water tank
- **DO NOT** cover any openings on the unit or insert objects into any openings
- **DO NOT** tilt or tip the unit or attempt to empty or fill while in operation
- **DO NOT** leave the unit unattended in closed rooms as the air could become saturated and leave condensation on walls or furniture. Always ensure good ventilation
- To protect against electric shock, do not immerse unit, plug or cord in water or other liquids
- Keep the cord away from areas where it could be walked on or tripped over
- Close supervision is necessary when any appliance is used by or near children
- To disconnect, first turn the unit **OFF**, grip the plug and pull from the wall outlet. Never pull the plug by the cord
- Turn the unit **OFF** and unplug from the outlet when not in use
- Turn the unit **OFF** when moving to another location and before cleaning
- **DO NOT** operate the humidifier in the presence of explosive and/or flammable fumes
- **DO NOT** place the humidifier or any parts near an open flame, cooking or other heating appliance
- The use of attachments not recommended by the manufacturer may be hazardous
- **DO NOT** place humidifier on a wooden or polished surface
- **DO NOT** operate if the housing is damaged
- There are no user serviceable parts in this product. Refer servicing to a qualified person
- This is **NOT** a toy

To prolong the life of this humidifier, using distilled water is highly recommended or run via an RO machine. Do not add fragrance or oil in the water, it will cause the machine to malfunction and void the warranty.

Parts Description:



Function:



Start/working situation

1. default start :display indicate the room temperature, default mist level is ``3`` level , if not touch any function , display will turn dark after 3 seconds , fan working.
2. Mist level choose: press the ``mist`` , it choose between ``1-3`` , 3 level is the biggest power working mode .
3. Set humidity : touch `` humidity`` , humidity will increase 5%RH between 40%-90%RH , continue to touch max 90%RH then cancel humidity set . if humidity %RH is twinkle ,it`s mean the room humidity still not reach your setting target humidity , it will working on current mist level . when the %RH reach your target humidity , it will stop make mist , fan will stop after 10 seconds ,UV stop too.
4. Timer(turn off) : timer is between 1-12 hours, when you choose the hours after 3 seconds, it will turn to timer mode, if the time count out , machine will auto turn off . touch the power can restart .
5. UV : turn on the machine, touch ``UV`` , UV generator will working , touch one more time, it will turn on . if water shortage, UV will auto turn off .if fill water before auto turn off (15 seconds) , UV will work again.
6. Sleep function: touch AUTO to start sleep mode, touch any button to wake up .

Water shortage : working situation, if water shortage, mist will stop making, fan will stop after 10 seconds, water shortage signal twinkle per 0.5 seonds, beep sound 3 time then turn off after 15 seconds, water level light turn off too.

Problem

problem	reason	solve
Light off, fan not working, no mist	Power not connect or have problem	Change another new power socket
Light on , fan not working , no mist	Base water too much	pure out little water of the base and restart
Mist small	Tranducer cover by furring	Clean the furring and change more clear water
Water can not reach base	Vavle stuck or water tank place not good	Clean vavle and place the water tank to right position
	Water higher than the	Pure out some water to be lower than the full mark

OPERATING INSTRUCTIONS – MANUAL FILL

This humidifier can be used 2 ways – manual fill or continuous filling from a water source.

- Ensure unit is not plugged into mains when filling with water – switch off and unplug
- Place unit on a smooth level surface that can support the unit when filled with water. Lift and remove the top small cover
- Fill with **DISTILLED** water if you are in a hard water area. **DO NOT** use hot water. **DO NOT** add fragrance or oil to water – it will cause unit to malfunction

NOTE: The unit has wheels due to the weight when filled. Please use the wheels and do not carry unit. CAUTION: When unit is filled it is heavy.

- Plug in power source and press the Power button – the power on indicator will illuminate (Green)
- To adjust mist intensity, turn the control knob clockwise to increase and – anti clockwise to decrease
- If the Red indicator light illuminates after powering on, either the unit is out of water or tank is not properly aligned. (See trouble shooting)
- Use the multiway directional nozzle to help vapour dispel. Ensure vapour is directed away from walls and furniture
- Pay attention to the water level – add water when low (Red indicator light illuminates when water is out)



SPECIFICATIONS			
Model	Model No.	Rated Voltage & Frequency	Wattage
16L Humidifier		220V 50Hz	80W

MAINTENANCE

- **DO NOT** clean whilst the unit is switched on. Turn off power and unplug unit
- **DO NOT** use cleaning detergents or chemicals to clean the tank or base. Detergent dissolved in the water supply can interfere with the mist output
- If the water tank is extremely dirty, soak with a mild bleach and water solution and rinse clean. **DO NOT** use detergent
- Wipe the exterior of the body with a damp cloth
- **DO NOT** spray water or any liquid onto the control
- Never immerse the base in water or let water enter the air outlet or other openings
- Clean and rinse the water tank and mist nozzle with lukewarm water frequently to avoid mineral build up
- Keep the nebulizer and water sensor free of mineral deposits. Remove water tank and empty the reservoir. Clean the nebulizer and sensor with a soft brush (old toothbrush)
- **DO NOT** scrape the nebulizer or water sensor
- **DO NOT** clean with tools that have metal parts
- **DO NOT** leave water to sit in the tank for more than a couple days as it may cause bacterial growth
- Always empty the tank if not planning to use for a few days

STORAGE

- When not in use, store in a cool dry location. To prevent dust and dirt use the packaging to repack the unit
- Follow the maintenance instructions
- If water is left in the unit during storage, it may harden and leave deposits that may affect the unit from operating properly
- Leave the cap of the water tank loose. This will prevent the cap and gasket from sticking together and prolong the life of the gasket

PROBLEM SOLVING

PROBLEM	REASON	SOLUTION
Light off, fan not working, no mist.	Power not connected or issue with power source.	Try another power socket.
Light on, fan not working, no mist.	Too much water is in the base.	Pour out water from the base and restart.
Only a small amount of mist.	Transducer cover by furring.	Clean the furring away and change water.
Water can not reach base.	Valve stuck or water tank positioned incorrectly on base.	Clean valve and reposition the water tank onto base.
	Water higher than the mark.	Pour out some water till its lower than the mark.

GENERAL ADVICE

Always use a hygrometer to check the humidity levels are correct. In cold weather, windows and walls may sometimes fog or develop excess condensation from too much humidity. If this occurs, reduce the mist intensity setting. Allowing too much moisture to accumulate, could allow bacteria and fungi to grow, and can also damage furniture, walls and wallpaper.

To prolong the life of this humidifier, using distilled water is highly recommended. Do not add fragrance or oil in the water, it will cause the machine to malfunction and void the warranty.

CONFORMITY WITH DIRECTIVES

This product is CE marked to denote conformity with Directives 2014/35/EU (Low Voltage) and 2014/30/EU (Electromagnetic Compatibility), as amended.

ENVIRONMENTAL PROTECTION



Disposal

This marking indicates that this product should not be disposed with other household wastes throughout the EU. To prevent possible harm to the environment or human health from uncontrolled waste disposal, recycle it responsibly to promote the sustainable reuse of material resources.

To return your used device, please use the return and collection systems or contact the retailer where the product was purchased. They can take this product for environmental safe recycling.

Warranty

This product is guaranteed under warranty and covers defects in material or workmanship from 1 year of date of purchase. The original bill of purchase (with purchase date) must be submitted.

The warranty will not apply in cases of: Misuse: by non-compliance of the instructions, normal wear and tear, incorrect use, e.g. overloading, non-approved accessories, force or damaged caused by external forces, if the plug has been tampered with or removed, partially or completely dismantled product, or interference by non-qualified persons.